

SIRE

PORTFOLIO

AUGUST | 2024



Welcome



We're thrilled to present our August 2024 Sire Portfolio.

Over the past 12 years, we've witnessed remarkable achievements by our customers using our sires. The front and back covers of this catalog celebrate the global successes that breeders have accomplished in such a short time.

Proven Performance Sires like POWERBALL-P and SUPERHERO exemplify these triumphs. MAINSTAGE and JAGGER daughters have become standout performers in herds across the U.S. and Australia, with JAGGER daughters winning two first-place awards in milking form at International Dairy Week, Australia 2024. Additionally, sires like YOLO and KONRAD consistently deliver breeder satisfaction and top performance year after year.

In April 2024, BLASKA made a strong debut on the Top-Ranked U.S. Proven Sire list, adding another accolade to our impressive Jetstream sire list. MOLINE recently joined the top ranks of proven U.S. sires, surpassing our expectations and expanding our roster of quality proven sires. These proven sires continue to produce exceptional milking daughters, enhancing reliability and confidence in our genetic programs worldwide.

Within these pages, you'll discover a robust and diverse lineup of sires, featuring top-performing genomics from some of the world's most elite cow families. Our offerings include time-tested Proven Performance Sires, Robotic Engineered Sires, Jetset Genomic Sires, Reprojet Fertility Sires, and Custom Cut Type Sires. We also continue to expand our sexed semen offerings to meet customer demands. As we navigate the evolving needs of our world, including the goal of supporting a sustainable food supply, agriculture and the dairy industry must continue to modernize infrastructure, processes, and genetic selection. We believe in the transformative power of genetics to help dairy producers achieve sustainability goals by improving efficiencies and protecting margins.

We are proud to be part of the URUS group, where we contribute to progressive genetic improvement. The URUS family of companies offers dairy and beef producers around the globe cutting-edge products, genetics, and herd management support and information. We are stronger than ever and look forward to the opportunities our genetics will provide to our customers.

Sincerely,
Jetstream Genetics



High Type Sires



Priority Genomic Sires



High Fertility Sires



Daughter Proven Sires



Produced For Robotic Engineering



Superior Sires

Duckett Heroic -ET	pg. 3
Peak Masino -ET	pg. 4
Cookiecutter Peak Hochi -ET	pg. 5
Progenesis Vance -ET	pg. 6
Peak Badker -ET	pg. 7
Peak Jarvis -ET Peak Mainstage	pg. 8
Peak Leeder -ET Peak McLaurin -ET	pg. 9
Trait Leaders	pg. 10
Proof Highlight	pg. 11
Peak Zane -ET	pg. 12
BGP Yolo -ET	pg. 13
Trent-Way Rae-Ban Red -ET	pg. 14
Trent-Way Redhot Red -ET	pg. 15
Peak Haxl -ET Vanden-Berge Peak Exum -ET	pg. 16
Coldsprings Blaska -ET Peak Delap -ET	pg. 17
Peak Jax -ET	pg. 18
Peak Jagger -ET	pg. 19

This material is printed with information supplied from CDCB Genetic Evaluations (08/2024)

FRONT COVER: Photos of **DG Powerball Belinda** by Guillaume Moy

BACK COVER: Photo of **Retraitehoeve Lilya** by Guillaume Moy

HEROIC

734HO00161

Esquire X Perfect X Doc

DOB:09-NOV-2022 • REG: HO840M003260843013



Sire: Sandy-Valley Esquire-ET
 Dam: Duckett Perfect Hallie-ET

MGS: Siemers Rengd Perfect-ET
 MGD: S-S-I Doc Have Not 8784-ET



**NEW
RELEASE
SIRE**



08/2024 GENOMIC SUMMARY

NM\$ +936

Milk	+2249	80%R
Fat	+98	+0.04%
Protein	+86	+0.05%
SCS	+2.89	75%R
PL	+3.3	74%R
DPR	-1.1	74%R
HCR	-0.4	
CCR	+0.2	

Net Merit \$	+936
Cheese Merit \$	+948
F Effic.	+289
Fert. Index	-0.2
CL	-1.6
EFI	+10.0%
0 DTRS / 0 HERDS	

08/2024 CALVING SUMMARY

SCE +2.3%

SCE	2.3%	63%R	0 Obs	0 Dtr
DCE	2.3%	57%R	0 Obs	0 Dtr
SSB	6.4%	61%R	0 Obs	0 Dtr
DSB	4.5%	55%R	0 Obs	0 Dtr
GL	-1.0			

aAa	N/A
DMS	234,345
KCN	AB
BCN	A2A2

08/2024 HEALTH SUMMARY

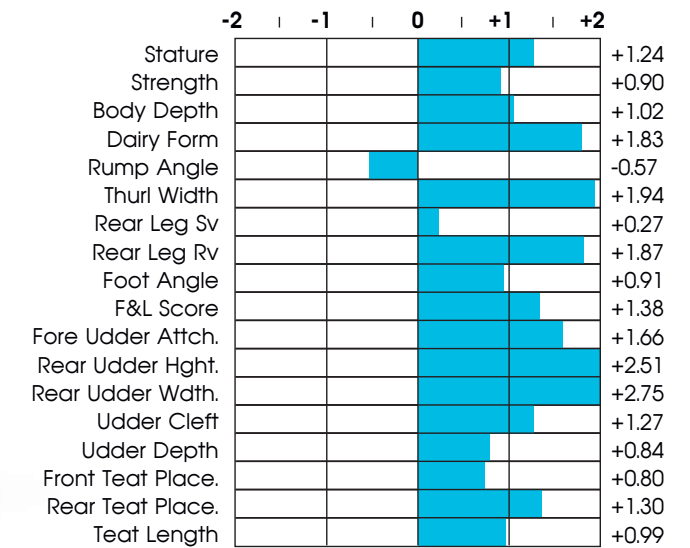
New Traits

Milk fever (hypocalcemia)	-0.1%
Displaced abomasum	-0.1%
Kefosis	+1.7%
Mastitis	+1.2%
Metritis	+1.4%
Retained placenta	-0.3%

08/2024 HA TYPE SUMMARY

GTPI +3076

PTAT	+2.17	79%R	UDC	+1.63	FLC	+1.29
Type USA			REL%:79		0 DTRS / 0 HERDS	



NM\$ +1067

08/2024 GENOMIC SUMMARY

Milk	+1757	79%R
Fat	+114	+0.17%
Protein	+70	+0.05%
SCS	+2.86	75%R
PL	+5.3	74%R
DPR	-0.3	74%R
HCR	+3.6	
CCR	+1.6	

Net Merit \$	+1067
Cheese Merit \$	+1079
F Effic.	+290
Fert. Index	+1.3
CL	+1.3
EFI	10.8%

0 DTRS / 0 HERDS

SCE +2.3%

08/2024 CALVING SUMMARY

SCE	2.3%	60%R	0 Obs	0 Dtr
DCE	2.0%	57%R	0 Obs	0 Dtr
SSB	5.7%	56%R	0 Obs	0 Dtr
DSB	4.0%	55%R	0 Obs	0 Dtr
GL	-2.0			

aAa	243
DMS	N/A
KCN	BB
BCN	A2A2

New Traits

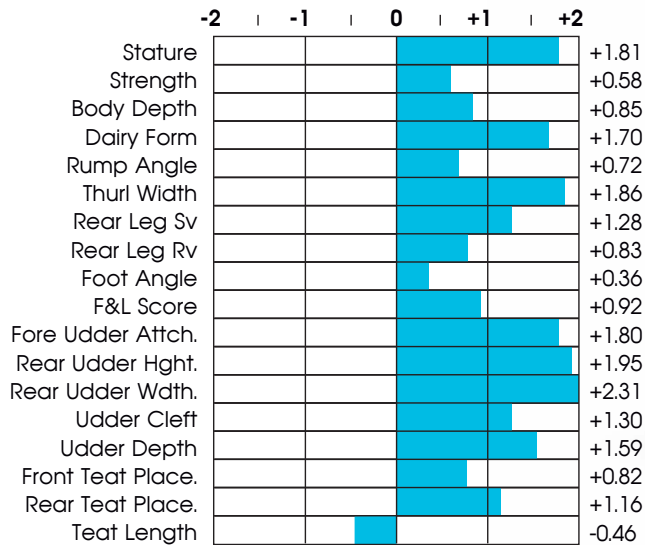
08/2024 HEALTH SUMMARY

Milk fever (hypocalcemia)	+0.1%
Displaced abomasum	+0.2%
Ketosis	+2.5%
Mastitis	+3.1%
Metritis	+1.8%
Retained placenta	-0.5%

GTPI +3148

08/2024 HA TYPE SUMMARY

PTAT	+1.88	78%R	UDC	+1.49	FLC	+0.49
Type USA			REL%: 78	0 DTRS	/ 0 HERDS	



MASINO



Sire: Aurora Tyrol-ET
Dam: Peak Malibu-ET
MGS: Peak Malibu-ET
MGD: Peak Malaga-ET



734HO00165
Tyrol X Upside X AltaZazzle
DOB: 11-AUG-2023 • REG# HO840M003272456494

GTPI +3148

NEW RELEASE SIRE



HOCHI

734HO00164

Achieve X Moonshiner X Acura
DOB:31-MAY-2023 • REG: HO840M003269404788



Sire: Peak Achieve
Dam: Cookiecutter Mshnr Helraird

MGS: Fly-Higher Moonshiner-ET
MGD: Cookiecutter Helga-ET



NM\$
+1207

NEW
RELEASE
SIRE



COOKIECUTTER PEAK HOCHI-ET • 734HO00164 • 99% RHA

08/2024 GENOMIC SUMMARY

NM\$ +1207

Milk	+2416	79%R
Fat	+111	+0.07%
Protein	+79	+0.01%
SCS	+2.70	75%R
PL	+5.6	74%R
DPR	-1.4	74%R
HCR	+2.3	
CCR	+0.4	

Net Merit \$	+1207
Cheese Merit \$	+1216
F Effic.	+347
Fert. Index	+0.3
CL	+0.1
EFI	+11.2%

0 DTRS / 0 HERDS

08/2024 CALVING SUMMARY

SCE +1.8%

SCE	1.8%	62%R	0 Obs	0 Dtr
DCE	2.3%	57%R	0 Obs	0 Dtr
SSB	5.5%	58%R	0 Obs	0 Dtr
DSB	5.7%	56%R	0 Obs	0 Dtr
GL	+0.0			

aAa	N/A
DMS	234
KCN	AA
BCN	A2A2

08/2024 HEALTH SUMMARY

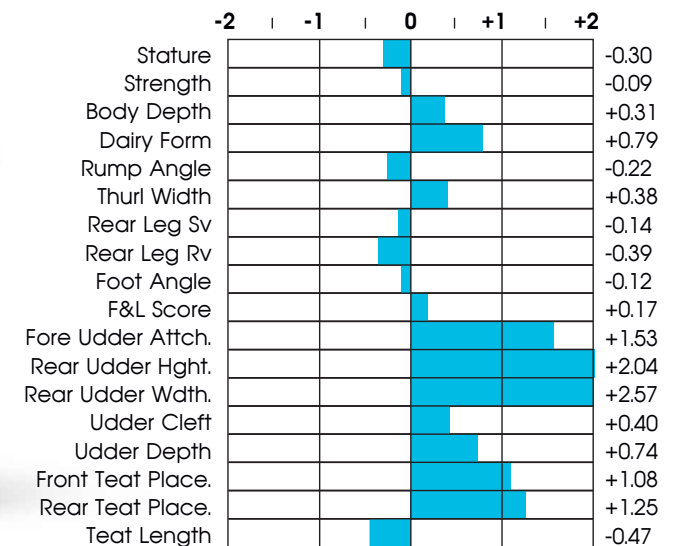
New Traits

Milk fever (hypocalcemia)	+0.1%
Displaced abomasum	+0.9%
Kefosis	+1.5%
Mastitis	+1.7%
Metritis	+0.8%
Retained placenta	-0.1%

08/2024 HA TYPE SUMMARY

GTPI +3125

PTAT	+0.99	78%R	UDC	+1.75	FLC	-0.17
Type	USA		REL%:	78	0 DTRS / 0 HERDS	



NM\$ +1027

08/2024 GENOMIC SUMMARY

Milk	+1550	80%R
Fat	+117	+0.21%
Protein	+78	+0.11%
SCS	+2.71	76%R
PL	+4.2	75%R
DPR	-0.3	74%R
HCR	+2.1	
CCR	+1.3	

Net Merit \$	+1027
Cheese Merit \$	+1050
F Effic.	+299
Fert. Index	+1.2
CL	-1.4
EFI	10.8%

0 DTRS / 0 HERDS

SCE +2.4%

08/2024 CALVING SUMMARY

SCE	2.4%	63%R	0 Obs	0 Dtr	aAa	432
DCE	2.2%	61%R	0 Obs	0 Dtr	DMS	123,135
SSB	6.0%	60%R	0 Obs	0 Dtr	KCN	BB
DSB	4.2%	60%R	0 Obs	0 Dtr	BCN	A2A2
GL	-1.0					

New Traits

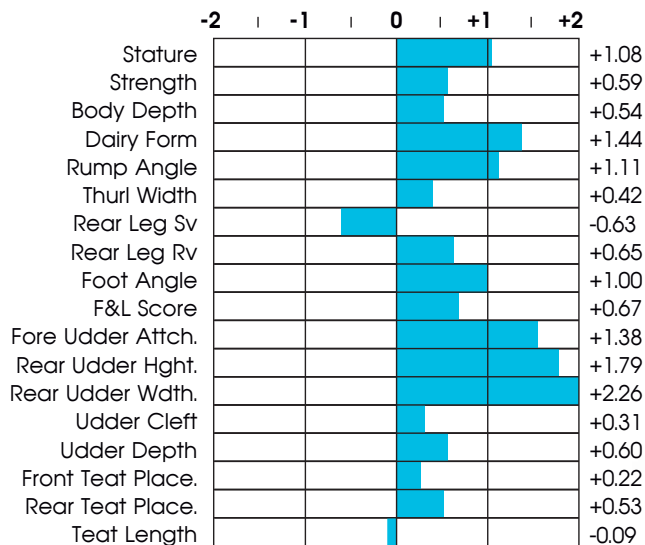
08/2024 HEALTH SUMMARY

Milk fever (hypocalcemia)	+0.0%
Displaced abomasum	+0.2%
Ketosis	+1.7%
Mastitis	+2.1%
Metritis	+1.5%
Retained placenta	+0.0%

GTPI +3129

08/2024 HA TYPE SUMMARY

PTAT	+1.31	78%R	UDC	+1.18	FLC	+0.48
Type USA			REL%: 78	0 DTRS / 0 HERDS		



VANCE



Sire: CookieCutter HolySmokes-ET
 Dam: Peak Plinko Vanessa-ET
 MGS: Peak AltaPlinko-ET
 MGD: T-Spruce Victoria-ET



734HO00159
 Holysmokes X AltaPlinko X Crimson
 DOB: 16-AUG-2022 • REG# HO840M003252197819

GTPI +3129



BADKER

734HO00149

AltaWheelhouse X Millenial X AltaTopshot
 DOB:16-AUG-2021 • REG: HO840M003235932952



Sire: Peak Wheelhouse-ET
 Dam: Peak Madame-ET

MGS: Winstar Juicy Millenial-ET
 MGD: Bomaz Maddle-ET



NM\$
+1026



08/2024 GENOMIC SUMMARY

NM\$ +1026

Milk	+1038	81%R
Fat	+111	+0.27%
Protein	+62	+0.11%
SCS	+2.70	79%R
PL	+5.3	77%R
DPR	-0.1	77%R
HCR	+0.5	
CCR	+0.5	

Net Merit \$	+1026
Cheese Merit \$	+1050
F Effic.	+269
Fert. Index	+0.8
CL	+1.2
EFI	+10.8%

0 DTRS / 0 HERDS

08/2024 CALVING SUMMARY

SCE +1.4%

SCE	1.4%	83%R	0 Obs	0 Dtr
DCE	1.6%	70%R	0 Obs	0 Dtr
SSB	5.4%	72%R	0 Obs	0 Dtr
DSB	5.1%	64%R	0 Obs	0 Dtr
GL	-3.0			

aAa	354
DMS	345,456
KCN	BB
BCN	A2A2

08/2024 HEALTH SUMMARY

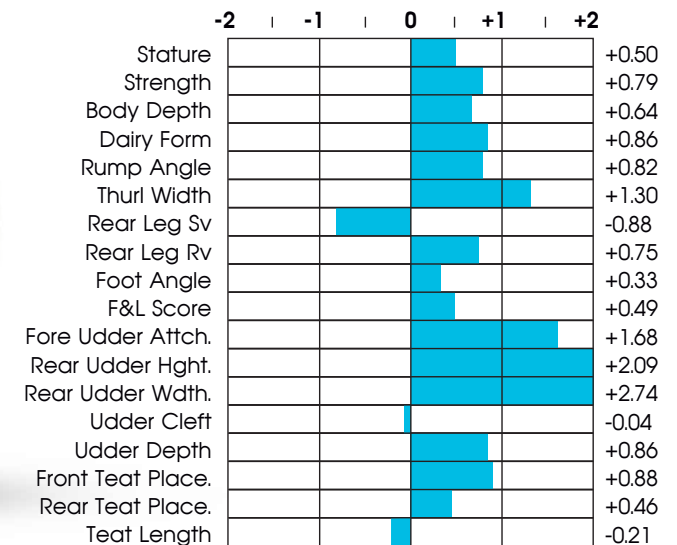
New Traits

Milk fever (hypocalcemia)	-0.1%
Displaced abomasum	+0.6%
Kefosis	+1.4%
Mastitis	+3.7%
Metritis	+2.2%
Retained placenta	+0.4%

08/2024 HA TYPE SUMMARY

GTPI +3072

PTAT	+1.19	80%R	UDC	+1.61	FLC	+0.44
Type USA			REL%: 80		0 DTRS / 0 HERDS	



NM\$ +1045

08/2024 GENOMIC SUMMARY

Milk	+1040	81%R			Net Merit \$	+1045
Fat	+93	+0.20%			Cheese Merit \$	+1063
Protein	+58	+0.09%			F Effic.	+266
SCS	+2.85	79%R			Fert. Index	+1.5
PL	+5.6	77%R			CL	+1.4
DPR	+0.0	77%R			EFI	10.4%
HCR	+3.6					
CCR	+1.0					
					0 DTRS / 0 HERDS	

JARVIS

NM\$ +1045

GTPI +3076

08/2024 HA TYPE SUMMARY

PTAT +1.78 81%R UDC +1.90 FLC +0.93 **0 DTRS / 0 HERDS**

SCE +1.4%

08/2024 CALVING SUMMARY

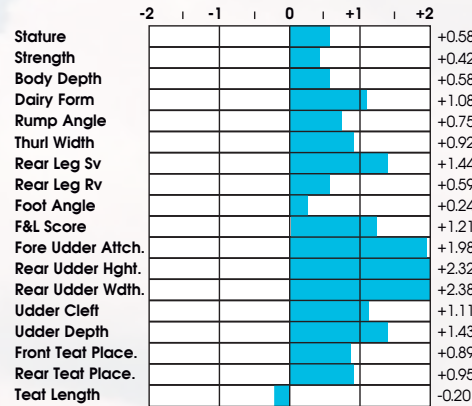
SCE	1.4%	83%R	0 Obs	0 Dtr	aAa	234
DCE	0.9%	70%R	0 Obs	0 Dtr	DMS	561,126
SSB	5.9%	66%R	0 Obs	0 Dtr	KCN	AA
DSB	3.6%	65%R	0 Obs	0 Dtr	BCN	A2A2
GL	-3.0					

734HO00146

Altahailed x Pursuit x Altarobson

DOB: 21-FEB-2021

REG# HO840M003224956183



New Traits

08/2024 HEALTH SUMMARY

Milk fever (hypocalcemia)	+0.0%
Displaced abomasum	+0.9%
Ketosis	+2.8%
Mastitis	+4.4%
Metritis	+1.6%
Retained placenta	-0.5%

NM\$ +962

08/2024 GENOMIC SUMMARY

Milk	+2653	94%R			Net Merit \$	+962
Fat	+73	-0.10%			Cheese Merit \$	+965
Protein	+83	+0.00%			F Effic.	+284
SCS	+2.92	91%R			Fert. Index	-0.7
PL	+3.9	84%R			CL	+0.5
DPR	-2.2	86%R			EFI	10.7%
HCR	+1.2					
CCR	-1.1					
					137 DTRS / 10 HERDS	

MAINSTAGE

SCR +1.9

GTPI +2869

08/2024 HA TYPE SUMMARY

PTAT +1.09 82%R UDC +1.46 FLC -1.30 **0 DTRS / 0 HERDS**

SCE +1.6%

08/2024 CALVING SUMMARY

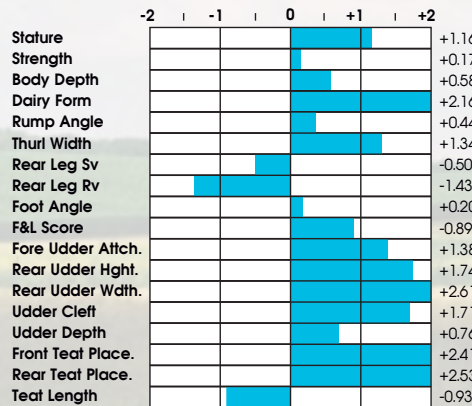
SCE	1.6%	94%R	0 Obs	0 Dtr	aAa	432
DCE	1.7%	73%R	0 Obs	0 Dtr	DMS	135,123
SSB	4.9%	72%R	0 Obs	0 Dtr	KCN	AB
DSB	3.8%	67%R	0 Obs	0 Dtr	BCN	A1A2
GL	-4.0					

734HO00118

Timberlake X Jedi X Bombero

DOB: 14-JUN-2019

REG: HO840M003205436541



New Traits

08/2024 HEALTH SUMMARY

Milk fever (hypocalcemia)	-0.1%
Displaced abomasum	+0.0%
Ketosis	+1.6%
Mastitis	+0.8%
Metritis	+2.4%
Retained placenta	+0.7%

SCE
+1.9%

LEEDER

734HO00142
AltaReal Money X Riveting X Guarantee
DOB: 8-Nov-2020
REG# HO840M003218932169



	-2	-1	0	+1	+2	
Stature						+1.73
Strength						+0.50
Body Depth						+0.55
Dairy Form						+1.55
Rump Angle						-0.13
Thurl Width						+0.93
Rear Leg Sv						+0.96
Rear Leg Rv						+0.15
Foot Angle						+0.51
F&L Score						+0.57
Fore Udder Attch.						+2.40
Rear Udder Hght.						+2.77
Rear Udder Wdth.						+2.61
Udder Clefth						+0.43
Udder Depth						+1.61
Front Teat Place.						+0.61
Rear Teat Place.						+0.53
Teat Length						-0.17

PEAK LEEDER-ET • 734HO00142 • 99% RHA

08/2024 GENOMIC SUMMARY

NM\$ +821

Milk	+927	81%R	Net Merit \$	+821
Fat	+76	+0.15%	Cheese Merit \$	+838
Protein	+56	+0.10%	F Effic.	+233
SCS	+2.91	78%R	Fert. Index	+2.8
PL	+2.8	77%R	CL	-0.6
DPR	+1.2	77%R	EFI	10.2%
HCR	+5.3			
CCR	+2.6		0 DTRS / 0 HERDS	

08/2024 HA TYPE SUMMARY

GTPI +2919

PTAT	+1.82	80%R	UDC	+1.82	FLC	+0.10	0 DTRS / 0 HERDS
------	-------	------	-----	-------	-----	-------	------------------

08/2024 CALVING SUMMARY

SCE +1.9%

SCE	1.9%	88%R	0 Obs	0 Dtr	aAa	234
DCE	1.9%	71%R	0 Obs	0 Dtr	DMS	561,135
SSB	6.2%	70%R	0 Obs	0 Dtr	KCN	AB
DSB	4.9%	65%R	0 Obs	0 Dtr	BCN	A2A2
GL	-1.0					

08/2024 HEALTH SUMMARY

New Traits

Milk fever (hypocalcemia)	-0.1%
Displaced abomasum	-0.2%
Ketosis	+2.5%
Mastitis	+2.0%
Metritis	+1.0%
Retained placenta	-1.1%

GTPI
+3134

MCLAURIN

734HO00158
Dzunda X Pursuit X Medley
DOB: 09-MAY-2022
REG: HO840M003247843646



	-2	-1	0	+1	+2	
Stature						+2.02
Strength						+0.97
Body Depth						+0.65
Dairy Form						+1.15
Rump Angle						-0.01
Thurl Width						+1.41
Rear Leg Sv						-0.11
Rear Leg Rv						+0.82
Foot Angle						+1.53
F&L Score						+0.84
Fore Udder Attch.						+2.16
Rear Udder Hght.						+1.68
Rear Udder Wdth.						+1.98
Udder Clefth						+0.81
Udder Depth						+1.96
Front Teat Place.						+0.99
Rear Teat Place.						+0.97
Teat Length						-0.33

PEAK MCLAURIN-ET • 734HO00158 • 99% RHA

08/2024 GENOMIC SUMMARY

NM\$ +996

Milk	+844	80%R	Net Merit \$	+996
Fat	+122	+0.34%	Cheese Merit \$	+1022
Protein	+64	+0.14%	F Effic.	+276
SCS	+2.80	76%R	Fert. Index	+1.4
PL	+4.1	75%R	CL	+0.9
DPR	+0.1	75%R	EFI	10.6%
HCR	+2.3			
CCR	+1.9		0 DTRS / 0 HERDS	

08/2024 HA TYPE SUMMARY

GTPI +3134

PTAT	+1.90	79%R	UDC	+1.43	FLC	+0.48	0 DTRS / 0 HERDS
------	-------	------	-----	-------	-----	-------	------------------

08/2024 CALVING SUMMARY

SCE +2.1%

SCE	2.1%	71%R	0 Obs	0 Dtr	aAa	243
DCE	1.7%	71%R	0 Obs	0 Dtr	DMS	345,135
SSB	5.7%	65%R	0 Obs	0 Dtr	KCN	AB
DSB	3.3%	65%R	0 Obs	0 Dtr	BCN	A2A2
GL	-1.0					

08/2024 HEALTH SUMMARY

New Traits

Milk fever (hypocalcemia)	-0.1%
Displaced abomasum	-0.1%
Ketosis	+0.6%
Mastitis	+2.5%
Metritis	+2.4%
Retained placenta	+0.2%

TRAIT LEADERS

CDCB Genetic Evaluations (08/2024)

GTPI		TPI	MILK		POUNDS	FAT		POUNDS	PROTEIN		POUNDS
734HO00165	MASINO	+3148	734HO00118	MAIN STAGE	+2653	734HO00113	MOLINE	+133	734HO00161	HEROIC	+86
734HO00158	MCLAURIN	+3134	734HO00164	HOCHI	+2416	734HO00158	MCLAURIN	+122	734HO00118	MAIN STAGE	+83
734HO00159	VANCE	+3129	734HO00111	BLASKA	+2266	734HO00159	VANCE	+117	734HO00164	HOCHI	+79
734HO00160	ZANE	+3129	734HO00161	HEROIC	+2249	734HO00165	MASINO	+114	734HO00159	VANCE	+78
734HO00164	HOCHI	+3125	734HO00131	LALA	+2094	734HO00164	HOCHI	+111	734HO00160	ZANE	+72
734HO00146	JARVIS	+3076	734HO00127	HOLDEN	+1915	734HO00149	BADKER	+111	734HO00165	MASINO	+70
734HO00161	HEROIC	+3076	734HO00162	RAE-BAN-RED	+1786	734HO00140	PROSPERO	+108	734HO00158	MCLAURIN	+64
734HO00149	BADKER	+3072	734HO00165	MASINO	+1757	734HO00131	LALA	+106	734HO00127	HOLDEN	+63
734HO00154	RADIOWAVE	+3040	734HO00113	MOLINE	+1560	734HO00091	BGP YOLO	+105	734HO00149	BADKER	+62
734HO00151	EXUM	+2961	734HO00159	VANCE	+1550	734HO00160	ZANE	+99	734HO00162	RAE-BAN-RED	+62

TYPE		INDEX	UDDER COMP.		SCORE	F & L COMP.		INDEX	SCE		INDEX
734HO00157	ADMIRE	+4.40	734HO00157	ADMIRE	+3.28	734HO00157	ADMIRE	+2.27	734HO00132	LAWMAN	+1.3
734HO00124	HAMMER	+4.03	734HO00148	JAX	+3.08	734HO00111	BLASKA	+1.91	734HO00146	JARVIS	+1.4
734HO00126	HAXL	+3.79	734HO00151	EXUM	+3.08	734HO00148	JAX	+1.68	734HO00149	BADKER	+1.4
734HO00148	JAX	+3.60	734HO00137	HAMPTON	+2.82	734HO00121	JAGGER	+1.59	734HO00162	RAE-BAN-RED	+1.4
734HO00137	HAMPTON	+3.34	734HO00124	HAMMER	+2.79	734HO00126	HAXL	+1.55	734HO00135	DZUNDA	+1.6
734HO00151	EXUM	+3.31	734HO00126	HAXL	+2.67	734HO00129	SKYE-RED	+1.54	734HO00118	MAIN STAGE	+1.6
734HO00121	JAGGER	+3.15	734HO00127	HOLDEN	+2.59	734HO00124	HAMMER	+1.53	734HO00134	DELAP	+1.7
734HO00111	BLASKA	+3.00	734HO00121	JAGGER	+2.50	734HO00137	HAMPTON	+1.48	734HO00160	ZANE	+1.8
734HO00127	HOLDEN	+2.94	734HO00111	BLASKA	+2.37	734HO00132	LAWMAN	+1.33	734HO00164	HOCHI	+1.8
734HO00132	LAWMAN	+2.85	734HO00091	BGP YOLO	+2.35	734HO00161	HEROIC	+1.29	734HO00143	COMPANY	+1.8

NET MERIT		\$	PL		MONTHS	SCS		SCORE	DTR PREG RATE		PERCENT
734HO00164	HOCHI	+1207	734HO00120	MEKI	+5.8	734HO00155	REDHOT-RED	+2.60	734HO00143	COMPANY	+1.4
734HO00160	ZANE	+1095	734HO00155	REDHOT-RED	+5.7	734HO00164	HOCHI	+2.70	734HO00142	LEEDER	+1.2
734HO00165	MASINO	+1067	734HO00164	HOCHI	+5.6	734HO00149	BADKER	+2.70	734HO00155	REDHOT-RED	+0.8
734HO00146	JARVIS	+1046	734HO00146	JARVIS	+5.6	734HO00099	EMBLEM	+2.70	734HO00137	HAMPTON	+0.6
734HO00159	VANCE	+1026	734HO00160	ZANE	+5.5	734HO00159	VANCE	+2.71	734HO00154	RADIOWAVE	+0.5
734HO00149	BADKER	+1026	734HO00165	MASINO	+5.3	734HO00121	JAGGER	+2.74	734HO00129	SKYE-RED	+0.5
734HO00158	MCLAURIN	+996	734HO00149	BADKER	+5.3	734HO00129	SKYE-RED	+2.75	734HO00158	MCLAURIN	+0.1
734HO00118	MAIN STAGE	+962	734HO00153	JETT	+4.7	734HO00137	HAMPTON	+2.76	734HO00146	JARVIS	+0.0
734HO00113	MOLINE	+959	734HO00154	RADIOWAVE	+4.6	734HO00132	LAWMAN	+2.77	734HO00135	DZUNDA	+0.0
734HO00140	PROSPERO	+948	734HO00162	RAE-BAN-RED	+4.6	734HO00148	JAX	+2.77	734HO00162	RAE-BAN-RED	+0.0

PROOF SHEET

CDCB Genetic Evaluations (08/2024)



Bull Code	Bull Name	PRODUCTION							TYPE			HEALTH			
		GTPI	NM\$	Milk	Fat	F%	Pro	P%	Type	UDC	FLC	PL	DPR	SCE	BCN
734HO00165	PEAK MASINO-ET	+3148	+1067	+1757	+114	+0.17	+70	+0.05	+1.88	+1.49	+0.49	+5.3	-0.3	+2.86	A2A2
734HO00158	PEAK MCLAURIN-ET	+3134	+996	+844	+122	+0.34	+64	+0.14	+1.90	+1.43	+0.48	+4.1	+0.1	+2.80	A2A2
734HO00159	PROGENESIS VANCE-ET	+3129	+1026	+1550	+117	+0.21	+78	+0.11	+1.31	+1.18	+0.48	+4.2	-0.3	+2.71	A2A2
734HO00160	PEAK ZANE-ET	+3129	+1095	+1308	+99	+0.18	+72	+0.11	+1.98	+1.51	+0.42	+5.5	-0.3	+2.81	A2A2
734HO00164	COOKIECUTTER PEAK HOCHI-ET	+3125	+1207	+2416	+111	+0.07	+79	+0.01	+0.99	+1.75	-0.17	+5.6	-1.4	+2.70	A2A2
734HO00146	PEAK JARVIS-ET	+3076	+1046	+1040	+93	+0.20	+58	+0.09	+1.78	+1.90	+0.93	+5.6	+0.0	+2.85	A2A2
734HO00161	DUCKETT HEROIC-ET	+3076	+936	+2249	+98	+0.04	+86	+0.05	+2.17	+1.63	+1.29	+3.3	-1.1	+2.89	A2A2
734HO00149	PEAK BADKER-ET	+3072	+1026	+1038	+111	+0.27	+62	+0.11	+1.19	+1.61	+0.44	+5.3	-0.1	+2.70	A2A2
734HO00154	PROGENESIS RADIOWAVE-ET	+3040	+944	+951	+98	+0.23	+62	+0.12	+1.29	+1.87	-0.05	+4.6	+0.5	+2.78	A2A2
734HO00151	VANDEN-BERGE PEAK EXUM-ET	+2961	+688	+1514	+93	+0.13	+54	+0.02	+3.31	+3.08	+1.05	+0.7	-1.4	+2.91	A2A2
734HO00113	PEAK MOLINE-ET	+2957	+959	+1560	+133	+0.27	+61	+0.04	+1.16	+1.59	+0.07	+2.4	-2.6	+2.90	A2A2
734HO00153	PEAK JETT-ET	+2942	+936	+1305	+84	+0.13	+63	+0.08	+1.29	+1.49	-0.15	+4.7	-0.4	+2.67	A2A2
734HO00150	PEAK DAHMEN-ET	+2939	+888	+1111	+94	+0.19	+66	+0.12	+1.66	+1.60	+0.24	+3.8	-2.2	+2.78	A2A2
734HO00135	AURORA DZUNDA-ET	+2930	+899	+828	+102	+0.27	+52	+0.10	+1.55	+1.54	-0.08	+3.3	+0.0	+2.95	A2A2
734HO00091	BGP YOLO-ET	+2929	+896	+1098	+105	+0.24	+45	+0.04	+1.56	+2.35	+0.79	+3.7	-1.3	+2.86	A2A2
734HO00140	PROGENESIS PROSPERO-ET	+2927	+948	+1460	+108	+0.19	+54	+0.03	+1.44	+2.13	-0.33	+3.9	-1.9	+2.81	A2A2
734HO00142	PEAK LEEDER-ET	+2919	+821	+927	+76	+0.15	+56	+0.10	+1.80	+1.82	+0.10	+2.8	+1.2	+2.91	A2A2
734HO00134	PEAK DELAP-ET	+2917	+887	+1447	+93	+0.14	+51	+0.02	+1.73	+1.91	+0.59	+3.9	-0.7	+2.91	A1A2
734HO00111	COLDSPRINGS BLASKA-ET	+2916	+745	+2266	+81	-0.02	+58	-0.05	+3.00	+2.37	+1.91	+2.6	-1.3	+2.95	A2A2
734HO00143	PEAK COMPANY-ET	+2901	+854	+464	+70	+0.20	+50	+0.14	+1.49	+1.63	+0.28	+4.3	+1.4	+2.80	A2A2
734HO00162	TRENT-WAY RAE-BAN-RED-ET	+2887	+860	+1786	+79	+0.04	+62	+0.02	+1.89	+1.09	+0.48	+4.6	+0.0	+2.82	A1A2
734HO00118	PEAK MAIN STAGE-ET	+2869	+962	+2653	+73	-0.10	+83	+0.00	+1.09	+1.46	-1.30	+3.9	-2.2	+2.92	A1A2
734HO00138	PROGENESIS LOEFFLER-ET	+2869	+788	+1184	+100	+0.20	+53	+0.06	+1.83	+2.34	+0.33	+1.9	-2.0	+2.82	A2A2
734HO00136	CO-OP TRIPP-ET	+2860	+849	+1063	+78	+0.14	+50	+0.06	+1.34	+1.54	+0.13	+5.4	-0.6	+2.66	A2A2
734HO00120	BLUMENFELD MEKI-ET	+2851	+866	+1328	+68	+0.06	+58	+0.06	+1.37	+1.68	+0.23	+5.8	-1.2	+2.67	A1A1
734HO00131	PEAK LALA-ET	+2842	+868	+2094	+106	+0.09	+62	-0.02	+1.13	+1.43	-0.04	+2.6	-3.0	+2.88	A2A2
734HO00127	PEAK HOLDEN-ET	+2831	+709	+1915	+65	-0.03	+63	+0.01	+2.94	+2.59	+0.71	+3.2	-3.3	+2.88	A1A2
734HO00155	TRENT-WAY REDHOT-RED-ET	+2822	+794	+932	+63	+0.10	+33	+0.01	+1.72	+1.63	+1.16	+5.7	+0.8	+2.60	A2A2
734HO00132	PEAK LAWMAN-ET	+2798	+610	+1415	+70	+0.06	+49	+0.02	+2.85	+2.08	+1.33	+2.5	-2.0	+2.77	A1A2
734HO00122	JIMTOWN NETWORK-RED-ET	+2765	+750	+1514	+76	+0.07	+45	-0.01	+1.88	+1.35	+0.47	+4.6	-0.6	+2.89	A2A2
734HO00116	PEAK EASTWOOD-ET	+2752	+691	+1084	+68	+0.10	+55	+0.08	+1.87	+1.71	+0.74	+1.5	-2.0	+2.93	A2A2
734HO00137	PEAK HAMPTON-ET	+2735	+465	+734	+33	+0.02	+34	+0.04	+3.34	+2.82	+1.48	+3.5	+0.6	+2.76	A2A2
734HO00093	SIEMERS HEALER-ET	+2664	+526	+1434	+66	+0.04	+49	+0.01	+2.48	+1.61	+0.86	+2.0	-1.2	+3.07	A2A2
734HO00103	PEAK RAMSEY-ET	+2649	+568	+782	+65	+0.13	+40	+0.06	+2.35	+2.33	+0.12	+1.9	-1.9	+2.85	A2A2
734HO00148	PEAK JAX-ET	+2642	+460	+1	+40	+0.16	+26	+0.10	+3.60	+3.08	+1.68	+2.6	-1.9	+2.77	A2A2
734HO00129	KOEPON SKYE-RED-ET	+2607	+473	+1176	+22	-0.09	+35	-0.01	+2.09	+1.78	+1.54	+4.4	+0.5	+2.75	A1A2
734HO00126	PEAK HAXL-ET	+2553	+278	+1089	+31	-0.04	+41	+0.02	+3.79	+2.67	+1.55	+1.6	-3.1	+2.98	A2A2
734HO00157	CURLYS ADMIRE	+2548	+250	-311	+52	+0.25	+18	+0.11	+4.40	+3.28	+2.27	+0.2	-3.1	+2.78	A2A2
734HO00124	PEAK HAMMER-ET	+2501	+156	+1119	+13	-0.11	+44	+0.03	+4.03	+2.79	+1.53	+1.1	-2.8	+2.82	A1A2
734HO00130	TRENT-WAY-JS RECROWN-RED-ET	+2468	+356	+602	+48	+0.10	+42	+0.09	+1.80	+1.17	+1.12	+1.5	-1.7	+2.92	A1A1

NM\$ +1095

08/2024 GENOMIC SUMMARY

Milk	+1308	79%R
Fat	+99	+0.18%
Protein	+72	+0.11%
SCS	+2.81	75%R
PL	+5.5	74%R
DPR	-0.3	74%R
HCR	+3.7	
CCR	+1.5	

Net Merit \$	+1095
Cheese Merit \$	+1117
F Effic.	+292
Fert. Index	+1.4
CL	+1.7
EFI	11.0%

0 DTRS / 0 HERDS

SCE +1.8%

08/2024 CALVING SUMMARY

SCE	1.8%	63%R	0 Obs	0 Dtr
DCE	1.8%	59%R	0 Obs	0 Dtr
SSB	5.7%	60%R	0 Obs	0 Dtr
DSB	4.0%	58%R	0 Obs	0 Dtr
GL	-2.0			

aAa	342
DMS	126,123
KCN	AB
BCN	A2A2

New Traits

08/2024 HEALTH SUMMARY

Milk fever (hypocalcemia)	-0.1%
Displaced abomasum	+0.7%
Ketosis	+1.4%
Mastitis	+3.1%
Metritis	+1.8%
Retained placenta	-0.6%

GTPI +3129

08/2024 HA TYPE SUMMARY

PTAT	+1.98	78%R	UDC	+1.51	FLC	+0.42
Type USA			REL%: 78		0 DTRS / 0 HERDS	

	-2	-1	0	+1	+2	
Stature						+2.13
Strength						+0.58
Body Depth						+0.75
Dairy Form						+2.20
Rump Angle						+1.04
Thurl Width						+1.74
Rear Leg Sv						+0.66
Rear Leg Rv						+0.69
Foot Angle						+1.01
F&L Score						+0.88
Fore Udder Attch.						+2.04
Rear Udder Hght.						+2.15
Rear Udder Wdth.						+2.54
Udder Cleft						+0.70
Udder Depth						+1.68
Front Teat Place.						+0.88
Rear Teat Place.						+0.68
Teat Length						+0.72

ZANE



Sire: Peak AltaExquisite-ET
Dam: Peak Zaida-ET

MGS: Peak Incredible-ET
MGD: Peak Zaida-ET



JETSET

734HO00160

AltaExquisite X Incredible X Pursuit
DOB: 4-OCT-2021 • REG: HO840M003252198015

NM\$ +1095



YOLO

734HO00091

Bandares X Meridian X Robust • DOB: 16-07-2017 • REG# HO840M003145398965

SCR
+1.2



BGP YOLO-ET • 734HO00091 • 100% RHA



08/2024 GENOMIC SUMMARY

NM\$ +896

Milk	+1098	99%R
Fat	+105	+0.24%
Protein	+45	+0.04%
SCS	+2.86	98%R
PL	+3.7	96%R
DPR	-1.3	95%R
HCR	+3.4	
CCR	-0.6	

Net Merit \$	+896
Cheese Merit \$	+109
F Effic.	+254
Fert. Index	-0.2
CL	+1.5
EFI	+9.5%

1115 DTRS / 317 HERDS

08/2024 CALVING SUMMARY

SCE +2.5%

SCE	2.5%	98%R	0 Obs	0 Dtr
DCE	2.5%	90%R	0 Obs	0 Dtr
SSB	6.0%	95%R	0 Obs	0 Dtr
DSB	5.3%	91%R	0 Obs	0 Dtr
GL	+0.0			

aAa	324
DMS	345,135
KCN	BB
BCN	A2A2

08/2024 HEALTH SUMMARY

New Traits

Milk fever (hypocalcemia)	+0.1%
Displaced abomasum	+0.1%
Ketosis	+1.0%
Mastitis	+1.9%
Metritis	-0.1%
Retained placenta	-0.6%

08/2024 HA TYPE SUMMARY

GTPi +2929

PTAT	+1.56	97%R
UDC	+2.35	
FLC	+0.79	

367 DTRS / 99 HERDS

RAE-BAN RED

NM\$ +860

08/2024 GENOMIC SUMMARY

Milk	+1786	81%R
Fat	+79	+0.04%
Protein	+62	+0.03%
SCS	+2.82	77%R
PL	+4.6	75%R
DPR	+0.0	74%R
HCR	-0.5	
CCR	-0.1	

Net Merit \$	+860
Cheese Merit \$	+868
F Effic.	+228
Fert. Index	+0.4
CL	+0.7
EFI	9.7%

0 DTRS / 0 HERDS

SCE +1.4%

08/2024 CALVING SUMMARY

SCE	1.4%	62%R	0 Obs	0 Dtr	aAa	423
DCE	2.0%	58%R	0 Obs	0 Dtr	DMS	234,345
SSB	5.6%	59%R	0 Obs	0 Dtr	KCN	AB
DSB	4.5%	57%R	0 Obs	0 Dtr	BCN	A1A2
GL	-4.0					

New Traits

08/2024 HEALTH SUMMARY

Milk fever (hypocalcemia)	+0.0%
Displaced abomasum	+0.3%
Ketosis	+1.5%
Mastitis	+0.8%
Metritis	+2.3%
Retained placenta	+0.4%

GTPI +2887

08/2024 HA TYPE SUMMARY

PTAT	+1.89	79%R	UDC	+1.09	FLC	+0.48
Type USA			REL%: 79	0 DTRS	0 HERDS	

	-2	-1	0	+1	+2	
Stature						+1.60
Strength						+1.07
Body Depth						+1.17
Dairy Form						+1.50
Rump Angle						+0.39
Thurl Width						+1.21
Rear Leg Sv						+0.92
Rear Leg Rv						+1.03
Foot Angle						+0.51
F&L Score						+0.76
Fore Udder Attch.						+1.22
Rear Udder Hght.						+2.00
Rear Udder Wdth.						+2.16
Udder Cleft						+0.62
Udder Depth						+0.32
Front Teat Place.						+1.08
Rear Teat Place.						+0.85
Teat Length						-0.04



Sire: Jimtown Network-Red-ET
Dam: Morningview 6683-ET

MGS: Peak Altaaltuve-ET
MGD: Morningview Resolve



734HO00162
Network-Red x Altaaltuve x Resolve
DOB: 09-DEC-2022 • REG# HO840003261835770

**MILK
+1786**



RED HOT RED

734HO00155

Ranger-Red x Salvo Rdc x Splendid-P*RC
 DOB: 20-FEB-2021 REG: HO840003240737628



Sire: 3star Oh Ranger-Red-ET
 Dam: Trent-Way-Js Rolvo-Red-ET

MGS: Salvo RDC-ET
 MGD: Trent-Way-Js Revamp-Red-ET

PTAT
+1.72



TRENT-WAY RED HOT-RED -ET • 734HO00155 • 99% RHA

08/2024 GENOMIC SUMMARY

NM\$ +794

Milk	+932	82%R
Fat	+63	+0.10%
Protein	+33	+0.01%
SCS	+2.60	78%R
PL	+5.7	76%R
DPR	+0.8	74%R
HCR	+3.9	
CCR	+1.5	

Net Merit \$	+794
Cheese Merit \$	+805
F Effic.	+171
Fert. Index	+1.6
CL	+2.1
EFI	+10.3%

0 DTRS / 0 HERDS

08/2024 CALVING SUMMARY

SCE +2.2%

SCE	2.2%	71%R	0 Obs	0 Dtr
DCE	2.6%	71%R	0 Obs	0 Dtr
SSB	5.7%	65%R	0 Obs	0 Dtr
DSB	4.3%	65%R	0 Obs	0 Dtr
GL	+0.0			

aAa	234
DMS	123,135
KCN	AB
BCN	A2A2

08/2024 HEALTH SUMMARY

New Traits

Milk fever (hypocalcemia)	+0.1%
Displaced abomasum	+0.4%
Kefosis	+1.0%
Mastitis	+2.5%
Metritis	+1.8%
Retained placenta	+0.3%

08/2024 HA TYPE SUMMARY

GTPI +2822

PTAT	+1.72	80%R	UDC	+1.63	FLC	+1.16
Type USA			REL%: 80		0 DTRS / 0 HERDS	

	-2	-1	0	+1	+2	
Stature						+1.54
Strength						-0.07
Body Depth						+0.04
Dairy Form						+1.29
Rump Angle						+0.69
Thurl Width						+0.60
Rear Leg Sv						+0.48
Rear Leg Rv						+1.32
Foot Angle						+1.55
F&L Score						+1.42
Fore Udder Attch.						+2.05
Rear Udder Hght.						+2.49
Rear Udder Wdth.						+1.49
Udder Cleft						+0.33
Udder Depth						+2.26
Front Teat Place.						+1.01
Rear Teat Place.						+0.57
Teat Length						-0.35

NM\$ +278

08/2024 GENOMIC SUMMARY

Milk	+1089	88%R
Fat	+31	-0.04%
Protein	+41	+0.02%
SCS	+2.98	84%R
PL	+1.6	80%R
DPR	-3.1	77%R
HCR	+11	
CCR	-2.6	

Net Merit \$	+278
Cheese Merit \$	+283
F Effic.	+78
Fert. Index	-2.1
CL	-3.1
EFI	10.0%

33 DTRS / 12 HERDS

HAXL



GTPI +2553

08/2024 HA TYPE SUMMARY

PTAT	+2.79	47%R	UDC	+2.67	FLC	+1.55	0 DTRS	0 HERDS
------	-------	------	-----	-------	-----	-------	--------	---------

SCE +3.0%

08/2024 CALVING SUMMARY

SCE	3.0%	93%R	0 Obs	0 Dtr
DCE	2.3%	80%R	0 Obs	0 Dtr
SSB	6.0%	86%R	0 Obs	0 Dtr
DSB	4.8%	76%R	0 Obs	0 Dtr
GL	+0.0			

aAa	213
DMS	246
KCN	BB
BCN	A2A2

New Traits

08/2024 HEALTH SUMMARY

Milk fever (hypocalcemia)	+0.0%
Displaced abomasum	+0.3%
Ketosis	+1.8%
Mastitis	+1.7%
Metritis	+1.0%
Retained placenta	+0.1%

NM\$ +688

08/2024 GENOMIC SUMMARY

Milk	+1514	82%R
Fat	+93	+0.13%
Protein	+54	+0.02%
SCS	+2.91	78%R
PL	+0.7	76%R
DPR	-1.4	75%R
HCR	+1.6	
CCR	-0.6	

Net Merit \$	+688
Cheese Merit \$	+694
F Effic.	+227
Fert. Index	-0.4
CL	-3.4
EFI	10.1%

0 DTRS / 0 HERDS

EXUM



GTPI +2961

08/2024 HA TYPE SUMMARY

PTAT	+3.31	80%R	UDC	+3.08	FLC	+1.05	0 DTRS	0 HERDS
------	-------	------	-----	-------	-----	-------	--------	---------

SCE +2.5%

08/2024 CALVING SUMMARY

SCE	2.5%	70%R	0 Obs	0 Dtr
DCE	2.0%	71%R	0 Obs	0 Dtr
SSB	7.0%	66%R	0 Obs	0 Dtr
DSB	4.7%	65%R	0 Obs	0 Dtr
GL	-1.0			

aAa	126
DMS	234,246
KCN	AA
BCN	A2A2

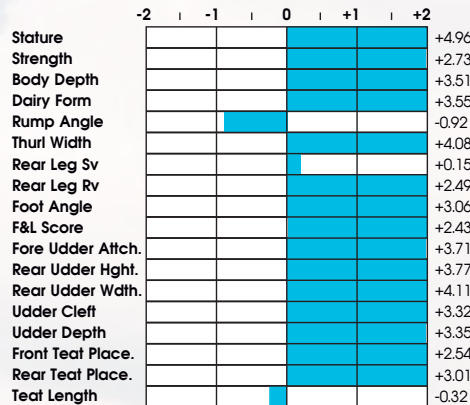
New Traits

08/2024 HEALTH SUMMARY

Milk fever (hypocalcemia)	+0.1%
Displaced abomasum	+0.5%
Ketosis	+2.3%
Mastitis	+3.1%
Metritis	+1.5%
Retained placenta	+0.0%

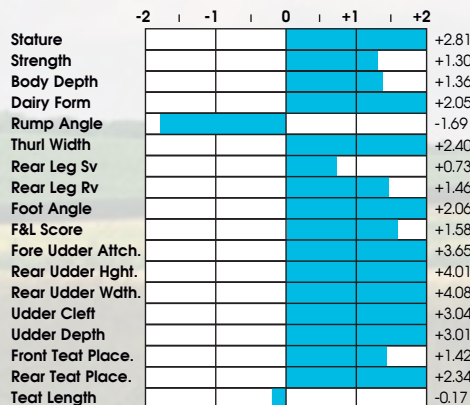
734HO00126

Axl X Doc X Monterey
 DOB: 08-FEB-2020
 REG: HO840M003212150432



734HO00151

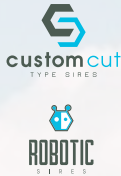
Champion-Red X Tropic X Delta-Lambda
 DOB: 12-AUG-2021
 REG# HO840M003224956183



**PTAT
+3.00**

BLASKA

734HO00111
 Doc X Denver X Bombero
 DOB: 10-DEC-2018
 REG# HO840M003139888016



	-2	-1	0	+1	+2	
Stature						+1.67
Strength						+0.93
Body Depth						+1.54
Dairy Form						+3.19
Rump Angle						-1.85
Thurl Width						+1.33
Rear Leg Sv						+1.21
Rear Leg Rv						+2.13
Foot Angle						+1.90
F&L Score						+2.17
Fore Udder Attch.						+1.89
Rear Udder Hght.						+3.78
Rear Udder Wdth.						+4.21
Udder Cleft						+2.39
Udder Depth						+0.56
Front Teat Place.						+1.74
Rear Teat Place.						+2.50
Teat Length						+0.17

COLDSPRINGS BLASKA-ET • 734HO00111 • 99% RHA

08/2024 GENOMIC SUMMARY

NM\$ +745

Milk	+2266	94%R	Net Merit \$	+745
Fat	+81	-0.02%	Cheese Merit \$	+740
Protein	+58	-0.05%	F Effic.	+231
SCS	+2.95	88%R	Fert. Index	-0.04
PL	+2.6	83%R	CL	-1.6
DPR	-1.3	82%R	EFI	9.8%
HCR	+2.3			
CCR	-0.4			

123 DTRS / 23 HERDS

08/2024 HA TYPE SUMMARY

GTPI +2916

PTAT +3.00 88%R UDC +2.37 FLC +1.91 28 DTRS
9 HERDS

08/2024 CALVING SUMMARY

SCE +2.4%

SCE	2.4%	91%R	0 Obs	0 Dtr	aAa	234
DCE	2.3%	74%R	0 Obs	0 Dtr	DMS	246,126
SSB	6.5%	82%R	0 Obs	0 Dtr	KCN	AB
DSB	6.1%	67%R	0 Obs	0 Dtr	BCN	A2A2
GL	-1.0					

08/2024 HEALTH SUMMARY

New Traits

Milk fever (hypocalcemia)	+0.0%
Displaced abomasum	+0.2%
Ketosis	+1.1%
Mastitis	-0.1%
Metritis	+1.2%
Retained placenta	+0.4%

PEAK DELAP-ET • 734HO00134 • 99% RHA

**SCE
+1.7%**

DELAP

734HO00134
 Fastball X Positive X Modesty
 DOB: 17-MAR-2020
 REG: HO840M003215425311



	-2	-1	0	+1	+2	
Stature						+0.85
Strength						-0.06
Body Depth						-0.09
Dairy Form						+1.30
Rump Angle						+0.32
Thurl Width						+0.67
Rear Leg Sv						+0.00
Rear Leg Rv						+0.52
Foot Angle						+0.73
F&L Score						+0.78
Fore Udder Attch.						+2.27
Rear Udder Hght.						+2.43
Rear Udder Wdth.						+2.09
Udder Cleft						+0.70
Udder Depth						+2.07
Front Teat Place.						+0.35
Rear Teat Place.						+0.37
Teat Length						-0.17

08/2024 GENOMIC SUMMARY

NM\$ +887

Milk	+1447	82%R	Net Merit \$	+887
Fat	+93	+0.14%	Cheese Merit \$	+893
Protein	+51	+0.02%	F Effic.	+246
SCS	+2.91	78%R	Fert. Index	+0.6
PL	+3.9	77%R	CL	+0.2
DPR	-0.7	77%R	EFI	11.0%
HCR	+2.9			
CCR	+0.2			

0 DTRS / 0 HERDS

08/2024 HA TYPE SUMMARY

GTPI +2917

PTAT +1.73 80%R UDC +1.91 FLC +0.59 0 DTRS
0 HERDS

08/2024 CALVING SUMMARY

SCE +1.7%

SCE	1.7%	84%R	0 Obs	0 Dtr	aAa	234
DCE	2.3%	70%R	0 Obs	0 Dtr	DMS	561,456
SSB	4.7%	73%R	0 Obs	0 Dtr	KCN	AA
DSB	4.6%	65%R	0 Obs	0 Dtr	BCN	A1A2
GL	-2.0					

08/2024 HEALTH SUMMARY

New Traits

Milk fever (hypocalcemia)	-0.1%
Displaced abomasum	+0.7%
Ketosis	+1.6%
Mastitis	+1.1%
Metritis	+1.2%
Retained placenta	-0.4%

NM\$ +460

08/2024 GENOMIC SUMMARY

Milk	+1	82%R
Fat	+40	+0.16%
Protein	+26	+0.10%
SCS	+2.77	78%R
PL	+2.6	76%R
DPR	-1.9	76%R
HCR	+0.8	
CCR	-1.6	

Net Merit \$	+460
Cheese Merit \$	+479
F Effic.	+110
Fert. Index	-1.3
CL	-1.9
EFI	9.8%

0 DTRS / 0 HERDS

SCE +1.8%

08/2024 CALVING SUMMARY

SCE	1.8%	82%R	0 Obs	0 Dtr	aAa	243
DCE	1.9%	71%R	0 Obs	0 Dtr	DMS	123,126
SSB	6.2%	65%R	0 Obs	0 Dtr	KCN	AB
DSB	4.7%	65%R	0 Obs	0 Dtr	BCN	A2A2
GL	-1.0					

New Traits

08/2024 HEALTH SUMMARY

Milk fever (hypocalcemia)	+0.0%
Displaced abomasum	+0.3%
Ketosis	+1.5%
Mastitis	+2.9%
Metritis	+1.5%
Retained placenta	-0.4%

GTPI +2642

08/2024 HA TYPE SUMMARY

PTAT	+3.60	81%R	UDC	+3.08	FLC	+1.68
Type USA			REL%: 81	0 DTRS / 0 HERDS		

	-2	-1	0	+1	+2	
Stature						+3.55
Strength						+1.19
Body Depth						+1.90
Dairy Form						+3.21
Rump Angle						-0.66
Thurl Width						+2.91
Rear Leg Sv						+0.27
Rear Leg Rv						+2.29
Foot Angle						+2.27
F&L Score						+2.31
Fore Udder Attch.						+3.72
Rear Udder Hght.						+4.36
Rear Udder Wdth.						+4.25
Udder Cleff						+2.43
Udder Depth						+3.44
Front Teat Place.						+1.84
Rear Teat Place.						+2.08
Teat Length						-0.74

JAX



Sire: Peak Jagger-ET
Dam: Peak Helena-ET

MGS: Peak Axl-ET
MGD: Lorita Honeymoon



734HO00148
Jagger X Axl X Doc
DOB: 5-JUL-2021 • REG: HO840M003235932767

**PTAT
+3.61**





JAGGER

734HO00121

Hunk X Doc X Doorsopen

DOB: 10-JULY-2019 • REG# HO840M003205436591



Sire: Siemers Hunk-ET
Dam: Cedarwall Jiffers-ET

MGS: Woodcrest King Doc
MGD: Midas-Touch Door Jaida-ET



08/2024 GENOMIC SUMMARY

NM\$ +275

Milk	-748	96%R
Fat	+35	+0.26%
Protein	+10	+0.14%
SCS	+2.74	94%R
PL	+1.7	88%R
DPR	-0.9	88%R
HCR	-1.5	
CCR	-1.2	

Net Merit \$	+275
Cheese Merit \$	+299
F Effic.	+55
Fert. Index	-1.0
CL	-1.0
EFI	+9.6%

558 DTRS / 203 HERDS

08/2024 CALVING SUMMARY

SCE +2.4%

SCE	2.4%	94%R	0 Obs	0 Dtr
DCE	2.3%	87%R	0 Obs	0 Dtr
SSB	6.9%	87%R	0 Obs	0 Dtr
DSB	5.7%	83%R	0 Obs	0 Dtr
GL	-1.0			

aAa	234
DMS	123,126
KCN	AB
BCN	A1A2

08/2024 HEALTH SUMMARY

New Traits

Milk fever (hypocalcemia)	+0.1%
Displaced abomasum	+0.3%
Kefosis	+2.0%
Mastitis	+1.6%
Metritis	+2.0%
Retained placenta	+0.4%

08/2024 HA TYPE SUMMARY

GTPI +2476

PTAT	+3.15	96%R	UDC	+2.50	FLC	+1.59
Type USA			REL%:	96	265 DTRS / 133 HERDS	

	-2	-1	0	+1	+2	
Stature						+3.83
Strength						+1.75
Body Depth						+1.94
Dairy Form						+2.07
Rump Angle						+0.32
Thurl Width						+2.33
Rear Leg Sv						-0.38
Rear Leg Rv						+2.42
Foot Angle						+2.51
F&L Score						+2.23
Fore Udder Attch.						+3.15
Rear Udder Hght.						+3.97
Rear Udder Wdth.						+3.88
Udder Cleff						+1.57
Udder Depth						+2.89
Front Teat Place.						+0.99
Rear Teat Place.						+1.35
Teat Length						-0.37

moving genetics forward[®]

Jetstream continues to grow and expand our reach, enhancing our ability to serve customers and breeders both locally and globally. We are excited to work closely with each of you to help achieve your breeding goals.

STAY IN TOUCH

web: www.jetstreamgenetics.com

phone: 855.4JETSTREAM (855.453.8787)

email: info@jetstreamgenetics.com

 /JetstreamGenetics

 /JetstreamGen



©2022 Jetstream Genetics
N8452 Airport Rd,
P.O. Box 437
Watertown, WI 53094

Join us as we move genetics forward.

