



SIRE PORTFOLIO

APRIL | 2024



Welcome



Jetstream Genetics is pleased to share our April 2024 Sire Portfolio.

Jetstream continues to grow and expand our footprint to better serve customers and breeders at home and abroad. We look forward to working with each of you more closely to help you reach your breeding goals.

We are proud of the accomplishments that our customers achieved with our sires during the past year. Proven Performance Sires YOLO and KONRAD sired national champions in Italy. HAXL and BLASKA daughters topped their classes in Spain. MAINSTAGE and JAGGER daughters are standouts in herds in the U.S. and Australia. JAGGER daughters won two first place awards in milking form at International Dairy Week, Australia 2024 – an outstanding accomplishment for this young sire. Many of our sires added exciting milking daughters recently, increasing reliability and confidence for genetic programs worldwide.

On these pages, you will find our strong and diverse sire lineup, built on top-performing genomics from some of the world's most elite cow families, including time-tested Proven Performance Sires, Robotic Engineered Sires, Jetset Genomic Sires, Reprojet Fertility Sires and Custom Cut Type Sires. Along with a top-caliber lineup, our sexed semen offering continues to grow to meet customer needs.

To meet the evolving needs of our world, including supporting a sustainable food supply, agriculture and the dairy industry must continue to modernize infrastructure, processes and genetic selection. We believe in the power of genetics to help dairy producers achieve sustainability goals through improved efficiencies and protecting margin.

We are proud to support progressive genetic improvement as a valued member of the URUS group. The companies within the URUS family provide dairy and beef producers around the world with cutting-edge products, genetics and herd management support and information. We have never been in a stronger position to serve our clients and we are confident for the opportunities these genetics provide our customers.

Sincerely,
Jetstream Genetics



High Type
Sires



Priority
Genomic Sires



High Fertility
Sires



Daughter Proven
Sires



Produced For
Robotic Engineering



Superior
Sires

This material is printed with information supplied from CDCB Genetic Evaluations (04/2024)
FRONT COVER: Photos of **Gorbo Jagger-Shimmer-ET & View Fort Jagger Satin-ET** by Bradley Cullen
BACK COVER: Photo of **Intense Jagger Darcy-ET** by Vicki Fletcher

| | |
|--|--------|
| Duckett Heroic-ET | pg. 3 |
| Progenesis Vance-ET | pg. 4 |
| Peak Zane-ET | pg. 5 |
| Trent-Way Rae-Ban Red-ET | pg. 6 |
| Trent-Way Redhot Red-ET | pg. 7 |
| Peak Jarvis-ET Peak Mainstage | pg. 8 |
| Peak Leeder-ET Peak McLaurin-ET | pg. 9 |
| Trait Leaders | pg. 10 |
| Proof Highlight | pg. 11 |
| Vanden-Berge Peak Exum-ET | pg. 12 |
| Peak Haxl-ET | pg. 13 |
| BGP Yolo-ET | pg. 14 |
| Peak Badker-ET | pg. 15 |
| Peak Holden-ET Curlys Admire-ET | pg. 16 |
| Coldsprings Blaska-ET Peak Delap-ET | pg. 17 |
| Peak Jax-ET | pg. 18 |
| Peak Jagger-ET | pg. 19 |

HEROIC

734HO00161

Esquire X Parfect X Doc

DOB:09-NOV-2022 • REG: HO840M003260843013



Sire: Sandy-Valley Esquire-ET
 Dam: Duckett Perfect Hallie-ET

MGS: Siemers Rengd Parfect-ET
 MGD: S-S-I Doc Have Not 8784-ET

**GTPI
 +3030**



04/2024 GENOMIC SUMMARY

NM\$ +913

| | | |
|---------|-------|--------|
| Milk | +2088 | 79%R |
| Fat | +96 | +0.05% |
| Protein | +81 | +0.05% |
| SCS | +2.88 | 75%R |
| PL | +3.3 | 74%R |
| DPR | -0.9 | 74%R |
| HCR | +0.2 | |
| CCR | +0.4 | |

| | |
|-----------------|-------|
| Net Merit \$ | +913 |
| Cheese Merit \$ | +925 |
| F Effic. | +278 |
| Fert. Index | -0.3 |
| CL | -1.3 |
| EFI | +9.9% |

0 DTRS / 0 HERDS

04/2024 CALVING SUMMARY

SCE +2.4%

| | | | | |
|-----|------|------|-------|-------|
| SCE | 2.4% | 63%R | 0 Obs | 0 Dtr |
| DCE | 2.4% | 57%R | 0 Obs | 0 Dtr |
| SSB | 6.4% | 60%R | 0 Obs | 0 Dtr |
| DSB | 4.5% | 55%R | 0 Obs | 0 Dtr |
| GL | -1.0 | | | |

| | |
|-----|---------|
| aAa | 312 |
| DMS | 234,345 |
| KCN | AB |
| BCN | A2A2 |

04/2024 HEALTH SUMMARY

New Traits

| | |
|---------------------------|-------|
| Milk fever (hypocalcemia) | -0.1% |
| Displaced abomasum | -0.2% |
| Kefosis | +1.6% |
| Mastitis | +1.3% |
| Metritis | +1.5% |
| Retained placenta | -0.4% |

04/2024 HA TYPE SUMMARY

GTPI +3030

| | | | | | | |
|------|-------|------|-------|-------|------------------|-------|
| PTAT | +2.10 | 79%R | UDC | +1.55 | FLC | +1.15 |
| Type | USA | | REL%: | 79 | 0 DTRS / 0 HERDS | |

| | -2 | -1 | 0 | +1 | +2 | |
|-------------------|----|----|---|----|----|-------|
| Stature | | | | | | +1.21 |
| Strength | | | | | | +0.82 |
| Body Depth | | | | | | +0.96 |
| Dairy Form | | | | | | +1.78 |
| Rump Angle | | | | | | -0.58 |
| Thurl Width | | | | | | +1.90 |
| Rear Leg Sv | | | | | | +0.22 |
| Rear Leg Rv | | | | | | +1.67 |
| Foot Angle | | | | | | +0.94 |
| F&L Score | | | | | | +1.25 |
| Fore Udder Attch. | | | | | | +1.54 |
| Rear Udder Hght. | | | | | | +2.41 |
| Rear Udder Wdth. | | | | | | +2.50 |
| Udder Cleft | | | | | | +1.26 |
| Udder Depth | | | | | | +0.89 |
| Front Teat Place. | | | | | | +0.81 |
| Rear Teat Place. | | | | | | +1.25 |
| Teat Length | | | | | | +0.97 |

NM\$ +1045

04/2024 GENOMIC SUMMARY

| | | |
|---------|-------|--------|
| Milk | +1506 | 79%R |
| Fat | +119 | +0.21% |
| Protein | +77 | +0.10% |
| SCS | +2.71 | 75%R |
| PL | +4.6 | 74%R |
| DPR | -0.2 | 74%R |
| HCR | +2.2 | |
| CCR | +1.5 | |

| | |
|-----------------|-------|
| Net Merit \$ | +1045 |
| Cheese Merit \$ | +1068 |
| F Effic. | +299 |
| Fert. Index | +0.8 |
| CL | -1.0 |
| EFI | 10.6% |

0 DTRS / 0 HERDS

SCE +2.4%

04/2024 CALVING SUMMARY

| | | | | | | |
|-----|------|------|-------|-------|-----|---------|
| SCE | 2.4% | 63%R | 0 Obs | 0 Dtr | aAa | 432 |
| DCE | 2.2% | 58%R | 0 Obs | 0 Dtr | DMS | 123,135 |
| SSB | 6.3% | 60%R | 0 Obs | 0 Dtr | KCN | BB |
| DSB | 4.3% | 57%R | 0 Obs | 0 Dtr | BCN | A2A2 |
| GL | -1.0 | | | | | |

New Traits

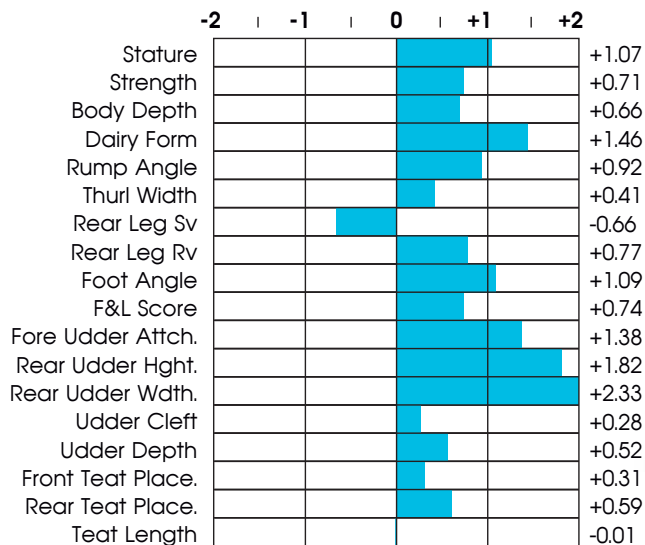
04/2024 HEALTH SUMMARY

| | |
|---------------------------|-------|
| Milk fever (hypocalcemia) | +0.0% |
| Displaced abomasum | +0.1% |
| Ketosis | +1.7% |
| Mastitis | +2.0% |
| Metritis | +1.5% |
| Retained placenta | +0.0% |

GTPI +3131

04/2024 HA TYPE SUMMARY

| | | | | | | |
|----------|-------|------|----------|------------------|-----|-------|
| PTAT | +1.44 | 78%R | UDC | +1.20 | FLC | +0.57 |
| Type USA | | | REL%: 78 | 0 DTRS / 0 HERDS | | |



VANCE



Sire: CookieCutter HolySmokes-ET
Dam: Peak Plinko Vanessa-ET

MGS: Peak AltaPlinko-ET
MGD: T-Spruce Victoria-ET

734HO00159

Holysmokes X AltaPlinko X Crimson
DOB: 16-AUG-2022 • REG# HO840M003252197819

**GTPI
+3131**



ZANE

734HO00160

AltaExquisite X Incredible X Pursuit
 DOB:4-OCT-2021 • REG: HO840M003252198015



Sire: Peak AltaExquisite-ET
 Dam: Peak Zaida-ET

MGS: Peak Incredible-ET
 MGD: Peak Zaida-ET

GTPI
+3079

04/2024 GENOMIC SUMMARY

NM\$ +1066

| | | |
|---------|-------|--------|
| Milk | +1237 | 79%R |
| Fat | +99 | +0.18% |
| Protein | +68 | +0.10% |
| SCS | +167 | 75%R |
| PL | +2.82 | 74%R |
| DPR | -0.3 | 74%R |
| HCR | +4.0 | |
| CCR | +1.8 | |

| | |
|-----------------|--------|
| Net Merit \$ | +1066 |
| Cheese Merit \$ | +1087 |
| F Effic. | +282 |
| Fert. Index | +0.9 |
| CL | +1.7 |
| EFI | +10.8% |

0 DTRS / 0 HERDS

04/2024 CALVING SUMMARY

SCE +1.8%

| | | | | |
|-----|------|------|-------|-------|
| SCE | 1.8% | 63%R | 0 Obs | 0 Dtr |
| DCE | 1.8% | 57%R | 0 Obs | 0 Dtr |
| SSB | 5.9% | 60%R | 0 Obs | 0 Dtr |
| DSB | 4.2% | 55%R | 0 Obs | 0 Dtr |
| GL | -2.0 | | | |

| | |
|-----|---------|
| aAa | 342 |
| DMS | 126,123 |
| KCN | AB |
| BCN | A2A2 |

04/2024 HEALTH SUMMARY

New Traits

| | |
|---------------------------|-------|
| Milk fever (hypocalcemia) | -0.1% |
| Displaced abomasum | +0.6% |
| Kefosis | +1.4% |
| Mastitis | +2.9% |
| Metritis | +1.7% |
| Retained placenta | -0.6% |

04/2024 HA TYPE SUMMARY

GTPI +3079

| | | | | | | |
|----------|-------|------|----------|-------|------------------|-------|
| PTAT | +2.02 | 78%R | UDC | +1.50 | FLC | +0.27 |
| Type USA | | | REL%: 78 | | 0 DTRS / 0 HERDS | |

| | -2 | -1 | 0 | +1 | +2 | |
|-------------------|----|----|---|----|----|-------|
| Stature | | | | | | +2.16 |
| Strength | | | | | | +0.71 |
| Body Depth | | | | | | +0.89 |
| Dairy Form | | | | | | +2.26 |
| Rump Angle | | | | | | +1.03 |
| Thurl Width | | | | | | +1.69 |
| Rear Leg Sv | | | | | | +0.78 |
| Rear Leg Rv | | | | | | +0.41 |
| Foot Angle | | | | | | +0.90 |
| F&L Score | | | | | | +0.80 |
| Fore Udder Attch. | | | | | | +1.85 |
| Rear Udder Hght. | | | | | | +2.21 |
| Rear Udder Wdth. | | | | | | +2.67 |
| Udder Cleff | | | | | | +0.87 |
| Udder Depth | | | | | | +1.56 |
| Front Teat Place. | | | | | | +0.97 |
| Rear Teat Place. | | | | | | +0.86 |
| Teat Length | | | | | | +0.85 |

RAE-BAN RED

NM\$ +846

04/2024 GENOMIC SUMMARY

| | | |
|---------|-------|--------|
| Milk | +1759 | 80%R |
| Fat | +78 | +0.03% |
| Protein | +60 | +0.02% |
| SCS | +2.82 | 76%R |
| PL | +4.5 | 75%R |
| DPR | +0.3 | 74%R |
| HCR | -0.4 | |
| CCR | +0.0 | |

| | |
|-----------------|------|
| Net Merit \$ | +846 |
| Cheese Merit \$ | +854 |
| F Effic. | +223 |
| Fert. Index | +0.6 |
| CL | +0.8 |
| EFI | 9.7% |

0 DTRS / 0 HERDS

SCE +1.3%

04/2024 CALVING SUMMARY

| | | | | | | |
|-----|------|------|-------|-------|-----|---------|
| SCE | 1.3% | 62%R | 0 Obs | 0 Dtr | aAa | 423 |
| DCE | 2.0% | 58%R | 0 Obs | 0 Dtr | DMS | 234,345 |
| SSB | 5.6% | 59%R | 0 Obs | 0 Dtr | KCN | AB |
| DSB | 4.6% | 57%R | 0 Obs | 0 Dtr | BCN | A1A2 |
| GL | -4.0 | | | | | |

New Traits

04/2024 HEALTH SUMMARY

| | |
|---------------------------|-------|
| Milk fever (hypocalcemia) | -0.1% |
| Displaced abomasum | +0.2% |
| Ketosis | +1.5% |
| Mastitis | +0.6% |
| Metritis | +2.2% |
| Retained placenta | +0.4% |

GTPI +2874

04/2024 HA TYPE SUMMARY

| | | | | | | |
|----------|-------|------|----------|--------|---------|-------|
| PTAT | +1.84 | 79%R | UDC | +1.09 | FLC | +0.46 |
| Type USA | | | REL%: 79 | 0 DTRS | 0 HERDS | |

| | -2 | -1 | 0 | +1 | +2 | |
|-------------------|----|----|---|----|----|-------|
| Stature | | | | | | +1.56 |
| Strength | | | | | | +1.03 |
| Body Depth | | | | | | +1.13 |
| Dairy Form | | | | | | +1.51 |
| Rump Angle | | | | | | +0.35 |
| Thurl Width | | | | | | +1.12 |
| Rear Leg Sv | | | | | | +0.80 |
| Rear Leg Rv | | | | | | +0.95 |
| Foot Angle | | | | | | +0.52 |
| F&L Score | | | | | | +0.74 |
| Fore Udder Attch. | | | | | | +1.24 |
| Rear Udder Hght. | | | | | | +1.96 |
| Rear Udder Wdth. | | | | | | +2.19 |
| Udder Cleft | | | | | | +0.64 |
| Udder Depth | | | | | | +0.26 |
| Front Teat Place. | | | | | | +1.10 |
| Rear Teat Place. | | | | | | +0.87 |
| Teat Length | | | | | | +0.06 |



Sire: Jimtown Network-Red-ET
Dam: Morningview 6683-ET

MGS: Peak Altaaltuve-ET
MGD: Morningview Resolve

734HO00162

Network-Red x Altaaltuve x Resolve

DOB: 09-DEC-2022 • REG# HO840003261835770

**NEW
RELEASE
SIRE**



RED HOT RED

734HO00155

Ranger-Red x Salvo Rdc x Splendid-P*RC
 DOB: 20-FEB-2021 REG: HO840003240737628



Sire: 3star Oh Ranger-Red-ET
 Dam: Trent-Way-Js Rolvo-Red-ET

MGS: Salvo RDC-ET
 MGD: Trent-Way-Js Revamp-Red-ET

A2A2



TRENT-WAY RED HOT-RED -ET • 734HO0155 • 99% RHA

04/2024 GENOMIC SUMMARY

NM\$ +821

| | | |
|---------|-------|--------|
| Milk | +987 | 80%R |
| Fat | +68 | +0.10% |
| Protein | +34 | +0.01% |
| SCS | +2.60 | 76%R |
| PL | +5.8 | 75%R |
| DPR | +0.8 | 74%R |
| HCR | +3.8 | |
| CCR | +1.4 | |

| | |
|-----------------|--------|
| Net Merit \$ | +821 |
| Cheese Merit \$ | +832 |
| F Effic. | +172 |
| Fert. Index | +1.3 |
| CL | +2.2 |
| EFI | +10.2% |

0 DTRS / 0 HERDS

04/2024 CALVING SUMMARY

SCE +2.1%

| | | | | |
|-----|------|------|-------|-------|
| SCE | 2.1% | 62%R | 0 Obs | 0 Dtr |
| DCE | 2.5% | 60%R | 0 Obs | 0 Dtr |
| SSB | 5.6% | 59%R | 0 Obs | 0 Dtr |
| DSB | 4.2% | 59%R | 0 Obs | 0 Dtr |
| GL | +0.0 | | | |

| | |
|-----|---------|
| aAa | 234 |
| DMS | 123,135 |
| KCN | AB |
| BCN | A2A2 |

04/2024 HEALTH SUMMARY

New Traits

| | |
|---------------------------|-------|
| Milk fever (hypocalcemia) | +0.1% |
| Displaced abomasum | +0.4% |
| Kefosis | +0.9% |
| Mastitis | +2.4% |
| Metritis | +0.1% |
| Retained placenta | +0.2% |

04/2024 HA TYPE SUMMARY

GTPI +2844

| | | | | | | |
|------|-------|------|-------|-------|------------------|-------|
| PTAT | +1.75 | 79%R | UDC | +1.64 | FLC | +1.34 |
| Type | USA | | REL%: | 79 | 0 DTRS / 0 HERDS | |

| | -2 | -1 | 0 | +1 | +2 | |
|-------------------|----|----|---|----|----|-------|
| Stature | | | | | | +1.63 |
| Strength | | | | | | +0.04 |
| Body Depth | | | | | | +0.19 |
| Dairy Form | | | | | | +1.35 |
| Rump Angle | | | | | | +0.52 |
| Thurl Width | | | | | | +0.72 |
| Rear Leg Sv | | | | | | +0.29 |
| Rear Leg Rv | | | | | | +1.45 |
| Foot Angle | | | | | | +1.48 |
| F&L Score | | | | | | +1.63 |
| Fore Udder Attch. | | | | | | +2.13 |
| Rear Udder Hght. | | | | | | +2.39 |
| Rear Udder Wdth. | | | | | | +1.46 |
| Udder Cleft | | | | | | +0.55 |
| Udder Depth | | | | | | +2.40 |
| Front Teat Place. | | | | | | +0.89 |
| Rear Teat Place. | | | | | | +0.61 |
| Teat Length | | | | | | -0.39 |

NM\$ +1004

04/2024 GENOMIC SUMMARY

| | | | | |
|-------------------------|-------|--------|------------------------|-------|
| Milk | +812 | 81%R | Net Merit \$ | +1004 |
| Fat | +91 | +0.21% | Cheese Merit \$ | +1022 |
| Protein | +52 | +0.09% | F Effic. | +250 |
| SCS | +2.85 | 78%R | Fert. Index | +1.2 |
| PL | +5.6 | 76%R | CL | +1.5 |
| DPR | +0.1 | 76%R | EFI | 10.3% |
| HCR | +3.5 | | | |
| CCR | +1.3 | | | |
| 0 DTRS / 0 HERDS | | | | |

JARVIS

GTPI +3019

GTPI +3019

04/2024 HA TYPE SUMMARY

PTAT +1.72 80%R UDC +1.85 FLC +0.99 **0 DTRS**
0 HERDS

SCE +1.5%

04/2024 CALVING SUMMARY

| | | | | | | |
|-----|------|------|--------|-------|------------|---------|
| SCE | 1.5% | 76%R | 65 Obs | 0 Dtr | aAa | 234 |
| DCE | 0.9% | 70%R | 0 Obs | 0 Dtr | DMS | 561,126 |
| SSB | 6.0% | 66%R | 52 Obs | 0 Dtr | KCN | AA |
| DSB | 3.8% | 65%R | 0 Obs | 0 Dtr | BCN | A2A2 |
| GL | -3.0 | | | | | |

New Traits

04/2024 HEALTH SUMMARY

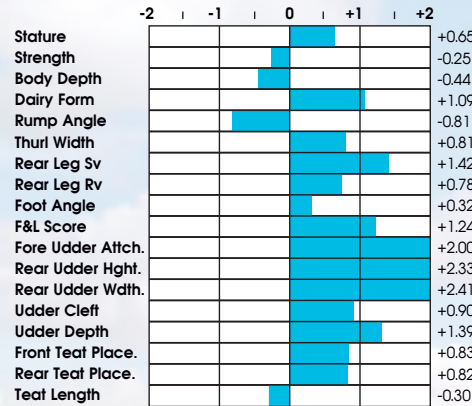
| | |
|---------------------------|-------|
| Milk fever (hypocalcemia) | +0.0% |
| Displaced abomasum | +0.9% |
| Ketosis | +2.7% |
| Mastitis | +4.2% |
| Metritis | +1.6% |
| Retained placenta | -0.4% |

734HO00146

Altahailed x Pursuit x Altarobson

DOB: 21-FEB-2021

REG# HO840M003224956183



NM\$ +995

04/2024 GENOMIC SUMMARY

| | | | | |
|--------------------------|-------|--------|------------------------|-------|
| Milk | +2401 | 91%R | Net Merit \$ | +995 |
| Fat | +77 | -0.05% | Cheese Merit \$ | +999 |
| Protein | +76 | +0.00% | F Effic. | +275 |
| SCS | +2.91 | 89%R | Fert. Index | +0.1 |
| PL | +5.0 | 81%R | CL | +0.7 |
| DPR | -0.9 | 82%R | EFI | 10.6% |
| HCR | +1.9 | | | |
| CCR | +0.6 | | | |
| 67 DTRS / 8 HERDS | | | | |

MAINSTAGE

MILK +2401

GTPI +2899

04/2024 HA TYPE SUMMARY

PTAT +1.10 81%R UDC +1.43 FLC -1.00 **0 DTRS**
0 HERDS

SCE +1.5%

04/2024 CALVING SUMMARY

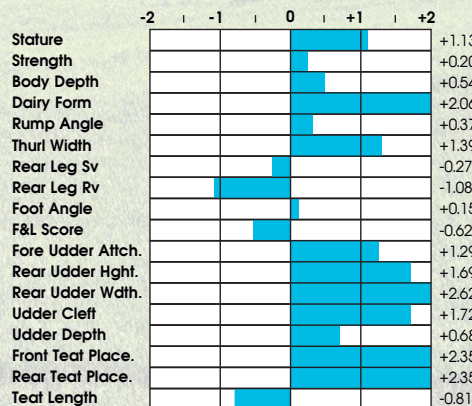
| | | | | | | |
|-----|------|------|----------|-------|------------|---------|
| SCE | 1.5% | 93%R | 1312 Obs | 0 Dtr | aAa | 432 |
| DCE | 1.6% | 72%R | 19 Obs | 0 Dtr | DMS | 135,123 |
| SSB | 4.9% | 72%R | 428 Obs | 0 Dtr | KCN | AB |
| DSB | 3.9% | 67%R | 10 Obs | 0 Dtr | BCN | A1A2 |
| GL | -4.0 | | | | | |

734HO00118

Timberlake X Jedi X Bombero

DOB: 14-JUN-2019

REG: HO840M003205436541



DPR
+1.4

LEEDER

734HO00142
AltaReal Money X Riveting X Guarantee
DOB: 8-Nov-2020
REG# HO840M003218932169



| | -2 | -1 | 0 | +1 | +2 | |
|-------------------|----|----|---|----|----|-------|
| Stature | | | | | | +1.65 |
| Strength | | | | | | +0.53 |
| Body Depth | | | | | | +0.57 |
| Dairy Form | | | | | | +1.48 |
| Rump Angle | | | | | | -0.13 |
| Thurl Width | | | | | | +0.96 |
| Rear Leg Sv | | | | | | +0.90 |
| Rear Leg Rv | | | | | | +0.17 |
| Foot Angle | | | | | | +0.36 |
| F&L Score | | | | | | +0.59 |
| Fore Udder Atch. | | | | | | +2.32 |
| Rear Udder Hght. | | | | | | +2.66 |
| Rear Udder Wdth. | | | | | | +2.56 |
| Udder Clef | | | | | | +0.43 |
| Udder Depth | | | | | | +1.53 |
| Front Teat Place. | | | | | | +0.62 |
| Rear Teat Place. | | | | | | +0.54 |
| Teat Length | | | | | | -0.19 |

PEAK LEEDER-ET • 734HO00142 • 99% RHA

04/2024 GENOMIC SUMMARY

NM\$ +819

| | | | | |
|---------|-------|--------|-----------------|-------|
| Milk | +932 | 81%R | Net Merit \$ | +819 |
| Fat | +75 | +0.14% | Cheese Merit \$ | +836 |
| Protein | +54 | +0.09% | F Effic. | +226 |
| SCS | +2.90 | 78%R | Fert. Index | +2.5 |
| PL | +3.1 | 76%R | CL | -0.4 |
| DPR | +1.4 | 76%R | EFI | 10.1% |
| HCR | +5.6 | | | |
| CCR | +3.0 | | | |

0 DTRS / 0 HERDS

04/2024 HA TYPE SUMMARY

GTPI +2892

PTAT +1.76 79%R UDC +1.77 FLC +0.13 0 DTRS
0 HERDS

04/2024 CALVING SUMMARY

SCE +1.9%

| | | | | | | |
|-----|------|------|---------|-------|-----|---------|
| SCE | 1.9% | 85%R | 656 Obs | 0 Dtr | aAa | 234 |
| DCE | 1.9% | 71%R | 0 Obs | 0 Dtr | DMS | 561,135 |
| SSB | 6.1% | 69%R | 713 Obs | 0 Dtr | KN | AB |
| DSB | 5.1% | 65%R | 0 Obs | 0 Dtr | BCN | A2A2 |
| GL | -1.0 | | | | | |

04/2024 HEALTH SUMMARY

New Traits

| | |
|---------------------------|-------|
| Milk fever (hypocalcemia) | -0.1% |
| Displaced abomasum | -0.2% |
| Ketosis | +2.3% |
| Mastitis | +1.7% |
| Metritis | +1.0% |
| Retained placenta | -1.0% |

A2A2

MCLAURIN

734HO00158
Dzunda X Pursuit X Medley
DOB: 09-MAY-2022
REG: HO840M003247843646



| | -2 | -1 | 0 | +1 | +2 | |
|-------------------|----|----|---|----|----|-------|
| Stature | | | | | | +1.99 |
| Strength | | | | | | +1.03 |
| Body Depth | | | | | | +0.78 |
| Dairy Form | | | | | | +1.26 |
| Rump Angle | | | | | | +0.02 |
| Thurl Width | | | | | | +1.32 |
| Rear Leg Sv | | | | | | +0.06 |
| Rear Leg Rv | | | | | | +0.63 |
| Foot Angle | | | | | | +1.49 |
| F&L Score | | | | | | +0.79 |
| Fore Udder Atch. | | | | | | +2.01 |
| Rear Udder Hght. | | | | | | +1.73 |
| Rear Udder Wdth. | | | | | | +2.10 |
| Udder Clef | | | | | | +0.92 |
| Udder Depth | | | | | | +1.78 |
| Front Teat Place. | | | | | | +1.09 |
| Rear Teat Place. | | | | | | +1.08 |
| Teat Length | | | | | | -0.26 |

PEAK MCLAURIN-ET • 734HO00158 • 99% RHA

04/2024 GENOMIC SUMMARY

NM\$ +982

| | | | | |
|---------|-------|--------|-----------------|-------|
| Milk | +713 | 80%R | Net Merit \$ | +982 |
| Fat | +121 | +0.33% | Cheese Merit \$ | +1008 |
| Protein | +60 | +0.13% | F Effic. | 267 |
| SCS | +2.79 | 76%R | Fert. Index | +1.1 |
| PL | +4.3 | 75%R | CL | +1.0 |
| DPR | +0.4 | 75%R | EFI | 10.5% |
| HCR | +2.2 | | | |
| CCR | +2.1 | | | |

0 DTRS / 0 HERDS

04/2024 HA TYPE SUMMARY

GTPI +3098

PTAT +1.96 79%R UDC +1.42 FLC +0.40 0 DTRS
0 HERDS

04/2024 CALVING SUMMARY

SCE +2.0%

| | | | | | | |
|-----|------|------|-------|-------|-----|---------|
| SCE | 2.0% | 61%R | 0 Obs | 0 Dtr | aAa | 243 |
| DCE | 1.6% | 60%R | 0 Obs | 0 Dtr | DMS | 345,135 |
| SSB | 5.7% | 58%R | 0 Obs | 0 Dtr | KN | AB |
| DSB | 3.5% | 58%R | 0 Obs | 0 Dtr | BCN | A2A2 |
| GL | -1.0 | | | | | |

04/2024 HEALTH SUMMARY

New Traits

| | |
|---------------------------|-------|
| Milk fever (hypocalcemia) | -0.1% |
| Displaced abomasum | -0.1% |
| Ketosis | +0.6% |
| Mastitis | +2.3% |
| Metritis | +2.4% |
| Retained placenta | +0.2% |

TRAIT LEADERS

CDCB Genetic Evaluations (04/2024)

| GTPI | | TPI | MILK | | POUNDS | FAT | | POUNDS | PROTEIN | | POUNDS |
|------------|-------------|-------|------------|-------------|--------|------------|-------------|--------|------------|-------------|--------|
| 734HO00159 | VANCE | +3131 | 734HO00118 | MAIN STAGE | +2401 | 734HO00113 | MOLINE | +136 | 734HO00161 | HEROIC | +81 |
| 734HO00158 | MCLAURIN | +3098 | 734HO00111 | BLASKA | +2263 | 734HO00158 | MCLAURIN | +121 | 734HO00159 | VANCE | +77 |
| 734HO00160 | ZANE | +3079 | 734HO00161 | HEROIC | +2088 | 734HO00159 | VANCE | +119 | 734HO00118 | MAIN STAGE | +76 |
| 734HO00161 | HEROIC | +3030 | 734HO00131 | LALA | +2010 | 734HO00140 | PROSPERO | +113 | 734HO00160 | ZANE | +68 |
| 734HO00146 | JARVIS | +3019 | 734HO00127 | HOLDEN | +1909 | 734HO00149 | BADKER | +106 | 734HO00127 | HOLDEN | +62 |
| 734HO00149 | BADKER | +3017 | 734HO00162 | RAE-BAN-RED | +1759 | 734HO00160 | ZANE | +99 | 734HO00158 | MCLAURIN | +60 |
| 734HO00113 | MOLINE | +2962 | 734HO00159 | VANCE | +1506 | 734HO00161 | HEROIC | +96 | 734HO00162 | RAE-BAN-RED | +60 |
| 734HO00091 | YOLO | +2912 | 734HO00113 | MOLINE | +1431 | 734HO00146 | JARVIS | +91 | 734HO00113 | MOLINE | +59 |
| 734HO00118 | MAIN STAGE | +2899 | 734HO00134 | DELAP | +1274 | 734HO00162 | RAE-BAN-RED | +78 | 734HO00149 | BADKER | +56 |
| 734HO00162 | RAE-BAN-RED | +2874 | 734HO00160 | ZANE | +1237 | 734HO00118 | MAIN STAGE | +77 | 734HO00111 | BLASKA | +55 |

| TYPE | | INDEX | UDDER COMP. | | SCORE | F & L COMP. | | INDEX | SCE | | INDEX |
|------------|---------|-------|-------------|---------|-------|-------------|------------|-------|------------|-------------|-------|
| 734HO00157 | ADMIRE | +4.37 | 734HO00157 | ADMIRE | +3.21 | 734HO00157 | ADMIRE | +2.30 | 734HO00132 | LAWMAN | +1.2 |
| 734HO00124 | HAMMER | +4.04 | 734HO00148 | JAX | +3.15 | 534HO00026 | DEMAN | +2.10 | 734HO00149 | BADKER | +1.3 |
| 734HO00148 | JAX | +3.79 | 734HO00151 | EXUM | +2.99 | 734HO00121 | JAGGER | +2.00 | 734HO00162 | RAE-BAN-RED | +1.3 |
| 734HO00126 | HAXL | +3.78 | 734HO00137 | HAMPTON | +2.80 | 734HO00148 | JAX | +1.81 | 734HO00146 | JARVIS | +1.5 |
| 734HO00121 | JAGGER | +3.50 | 734HO00124 | HAMMER | +2.80 | 734HO00111 | BLASKA | +1.77 | 734HO00118 | MAIN STAGE | +1.5 |
| 734HO00137 | HAMPTON | +3.41 | 734HO00121 | JAGGER | +2.67 | 734HO00124 | HAMMER | +1.50 | 734HO00120 | MEKI | +1.6 |
| 734HO00151 | EXUM | +3.28 | 734HO00126 | HAXL | +2.66 | 734HO00137 | HAMPTON | +1.39 | 734HO00135 | DZUNDA | +1.7 |
| 734HO00127 | HOLDEN | +2.96 | 734HO00127 | HOLDEN | +2.55 | 734HO00155 | REDHOT-RED | +1.34 | 734HO00110 | AUSTAD | +1.7 |
| 734HO00111 | BLASKA | +2.79 | 734HO00091 | YOLO | +2.36 | 734HO00126 | HAXL | +1.33 | 734HO00160 | ZANE | +1.8 |
| 734HO00161 | HEROIC | +2.10 | 734HO00111 | BLASKA | +2.24 | 734HO00161 | HEROIC | +1.15 | 734HO00148 | JAX | +1.9 |

| NET MERIT | | \$ | PL | | MONTHS | SCS | | SCORE | DTR PREG RATE | | PERCENT |
|------------|------------|-------|------------|-------------|--------|------------|------------|-------|---------------|-------------|---------|
| 734HO00160 | ZANE | +1066 | 734HO00155 | REDHOT-RED | +5.8 | 734HO00155 | REDHOT-RED | +2.60 | 734HO00142 | LEEDER | +1.4 |
| 734HO00159 | VANCE | +1045 | 734HO00146 | JARVIS | +5.6 | 734HO00153 | JETT | +2.66 | 734HO00155 | REDHOT-RED | +0.8 |
| 734HO00146 | JARVIS | +1004 | 734HO00160 | ZANE | +5.5 | 734HO00159 | VANCE | +2.71 | 734HO00137 | HAMPTON | +0.7 |
| 734HO00118 | MAIN STAGE | +995 | 734HO00149 | BADKER | +5.3 | 734HO00149 | BADKER | +2.72 | 734HO00154 | RADIOWAVE | +0.5 |
| 734HO00158 | MCLAURIN | +982 | 734HO00118 | MAIN STAGE | +5.0 | 734HO00154 | RADIOWAVE | +2.76 | 734HO00158 | MCLAURIN | +0.4 |
| 734HO00140 | PROSPERO | +981 | 734HO00154 | RADIOWAVE | +4.7 | 734HO00137 | HAMPTON | +2.76 | 734HO00162 | RAE-BAN-RED | +0.3 |
| 734HO00149 | BADKER | +979 | 734HO00159 | VANCE | +4.6 | 734HO00157 | ADMIRE | +2.77 | 734HO00146 | JARVIS | +0.1 |
| 734HO00113 | MOLINE | +964 | 734HO00162 | RAE-BAN-RED | +4.5 | 734HO00158 | MCLAURIN | +2.79 | 734HO00149 | BADKER | -0.1 |
| 734HO00161 | HEROIC | +913 | 734HO00158 | MCLAURIN | +4.3 | 734HO00148 | JAX | +2.79 | 734HO00159 | VANCE | -0.2 |
| 734HO00091 | YOLO | +884 | 734HO00140 | PROSPERO | +4.3 | 734HO00121 | JAGGER | +2.80 | 734HO00160 | ZANE | -0.3 |

PROOF SHEET

CDCB Genetic Evaluations (04/2024)



| Bull Code | Bull Name | PRODUCTION | | | | | | | TYPE | | | HEALTH | | | |
|------------|----------------------------|------------|-------|-------|------|-------|-----|-------|-------|-------|-------|--------|------|------|------|
| | | GTPI | NM\$ | Milk | Fat | F% | Pro | P% | Type | UDC | FLC | PL | DPR | SCE | BCN |
| 734HO00159 | PROGENESIS VANCE-ET | +3132 | +1045 | +1506 | +119 | +0.21 | +77 | +0.10 | +1.44 | +1.20 | +0.57 | +4.6 | -0.2 | +2.4 | A2A2 |
| 734HO00158 | PEAK MCLAURIN-ET | +3098 | +982 | +713 | +121 | +0.33 | +60 | +0.13 | +1.96 | +1.42 | +0.40 | +4.3 | +0.4 | +2.0 | A2A2 |
| 734HO00160 | PEAK ZANE-ET | +3079 | +1065 | +1237 | +99 | +0.18 | +68 | +0.10 | +2.02 | +1.50 | +0.27 | +5.5 | -0.3 | +1.8 | A2A2 |
| 734HO00161 | DUCKETT HEROIC-ET | +3031 | +913 | +2088 | +96 | +0.05 | +81 | +0.05 | +2.10 | +1.55 | +1.15 | +3.3 | -0.9 | +2.6 | A2A2 |
| 734HO00146 | PEAK JARVIS-ET | +3018 | +1004 | +812 | +91 | +0.21 | +52 | +0.09 | +1.72 | +1.85 | +0.99 | +5.6 | +0.1 | +1.7 | A2A2 |
| 734HO00149 | PEAK BADKER-ET | +3018 | +979 | +863 | +106 | +0.25 | +56 | +0.10 | +1.26 | +1.70 | +0.48 | +5.3 | -0.1 | +1.4 | A2A2 |
| 734HO00154 | PROGENESIS RADIOWAVE-ET | +3004 | +917 | +860 | +97 | +0.22 | +57 | +0.10 | +1.42 | +1.99 | +0.13 | +4.7 | +0.5 | +2.3 | A2A2 |
| 734HO00113 | PEAK MOLINE-ET | +2963 | +964 | +1431 | +136 | +0.28 | +59 | +0.05 | +1.19 | +1.56 | +0.02 | +2.5 | -2.3 | +2.3 | A2A2 |
| 734HO00140 | PROGENESIS PROSPERO-ET | +2952 | +981 | +1478 | +113 | +0.19 | +54 | +0.03 | +1.49 | +2.10 | -0.27 | +4.3 | -1.7 | +2.2 | A2A2 |
| 734HO00145 | PEAK ESCAPE-ET | +2938 | +837 | +1409 | +90 | +0.12 | +62 | +0.06 | +1.72 | +2.24 | +0.23 | +3.1 | -1.4 | +1.6 | A1A1 |
| 734HO00139 | PEAK EWING-ET | +2920 | +855 | +215 | +106 | +0.35 | +54 | +0.17 | +1.90 | +1.12 | +0.06 | +3.9 | -1.1 | +2.5 | A2A2 |
| 734HO00153 | PEAK JETT-ET | +2914 | +942 | +1231 | +84 | +0.13 | +60 | +0.07 | +1.20 | +1.35 | -0.04 | +5.3 | -0.3 | +1.8 | A2A2 |
| 734HO00091 | BGP YOLO-ET | +2913 | +883 | +1032 | +104 | +0.22 | +42 | +0.03 | +1.60 | +2.36 | +0.79 | +3.9 | -1.1 | +2.5 | A2A2 |
| 734HO00138 | PROGENESIS LOEFFLER-ET | +2910 | +828 | +1193 | +105 | +0.20 | +54 | +0.06 | +1.90 | +2.29 | +0.31 | +2.4 | -1.7 | +2.3 | A2A2 |
| 734HO00118 | PEAK MAIN STAGE-ET | +2899 | +996 | +2401 | +77 | -0.05 | +76 | +0.00 | +1.10 | +1.43 | -1.00 | +5.0 | -0.9 | +1.5 | A1A2 |
| 734HO00151 | VANDEN-BERGE PEAK EXUM-ET | +2894 | +631 | +1267 | +90 | +0.14 | +47 | +0.03 | +3.28 | +2.99 | +1.03 | +0.6 | -1.2 | +2.5 | A2A2 |
| 734HO00142 | PEAK LEEDER-ET | +2893 | +819 | +932 | +75 | +0.14 | +54 | +0.09 | +1.76 | +1.77 | +0.13 | +3.1 | +1.4 | +2.0 | A2A2 |
| 734HO00150 | PEAK DAHMEN-ET | +2891 | +878 | +1027 | +92 | +0.18 | +62 | +0.10 | +1.50 | +1.41 | +0.20 | +4.3 | -1.9 | +1.8 | A2A2 |
| 734HO00134 | PEAK DELAP-ET | +2883 | +854 | +1274 | +90 | +0.14 | +48 | +0.03 | +1.88 | +1.97 | +0.60 | +4.0 | -0.7 | +1.7 | A1A2 |
| 734HO00143 | PEAK COMPANY-ET | +2880 | +851 | +457 | +68 | +0.18 | +48 | +0.12 | +1.45 | +1.57 | +0.33 | +4.6 | +1.5 | +1.7 | A2A2 |
| 734HO00162 | TRENT-WAY RAE-BAN-RED-ET | +2874 | +846 | +1759 | +78 | +0.04 | +60 | +0.02 | +1.84 | +1.09 | +0.46 | +4.5 | +0.3 | +1.2 | A1A2 |
| 734HO00135 | AURORA DZUNDA-ET | +2873 | +872 | +705 | +101 | +0.26 | +48 | +0.09 | +1.44 | +1.39 | -0.29 | +3.4 | +0.1 | +1.7 | A2A2 |
| 734HO00131 | PEAK LALA-ET | +2858 | +877 | +2010 | +108 | +0.10 | +61 | +0.00 | +1.29 | +1.49 | +0.04 | +3.0 | -2.8 | +2.2 | A2A2 |
| 734HO00111 | COLDSPRINGS BLASKA-ET | +2850 | +717 | +2263 | +76 | -0.04 | +55 | -0.05 | +2.79 | +2.24 | +1.77 | +2.6 | -1.4 | +2.3 | A2A2 |
| 734HO00155 | TRENT-WAY REDHOT-RED-ET | +2845 | +821 | +987 | +68 | +0.10 | +34 | +0.01 | +1.75 | +1.64 | +1.34 | +5.8 | +0.8 | +2.0 | A2A2 |
| 734HO00136 | CO-OP TRIPP-ET | +2834 | +832 | +1048 | +78 | +0.13 | +49 | +0.06 | +1.30 | +1.54 | +0.06 | +5.5 | -0.5 | +1.8 | A2A2 |
| 734HO00127 | PEAK HOLDEN-ET | +2802 | +703 | +1909 | +66 | -0.02 | +62 | +0.01 | +2.96 | +2.55 | +0.66 | +3.0 | -3.4 | +1.9 | A1A2 |
| 734HO00132 | PEAK LAWMAN-ET | +2752 | +575 | +1321 | +70 | +0.07 | +44 | +0.01 | +2.83 | +1.99 | +1.17 | +2.3 | -1.9 | +1.2 | A1A2 |
| 734HO00123 | PEAK CASE-ET | +2751 | +799 | +1132 | +87 | +0.15 | +59 | +0.08 | +0.87 | +0.77 | -0.72 | +3.8 | -1.9 | +2.3 | A2A2 |
| 734HO00116 | PEAK EASTWOOD-ET | +2717 | +661 | +1052 | +65 | +0.08 | +53 | +0.07 | +1.92 | +1.66 | +0.69 | +1.5 | -1.7 | +2.1 | A2A2 |
| 734HO00137 | PEAK HAMPTON-ET | +2712 | +459 | +654 | +33 | +0.03 | +30 | +0.03 | +3.41 | +2.80 | +1.39 | +3.6 | +0.7 | +2.1 | A2A2 |
| 734HO00148 | PEAK JAX-ET | +2663 | +465 | +60 | +42 | +0.14 | +26 | +0.09 | +3.79 | +3.15 | +1.81 | +2.6 | -1.8 | +2.0 | A2A2 |
| 734HO00093 | SIEMERS HEALER-ET | +2637 | +495 | +1246 | +62 | +0.05 | +44 | +0.02 | +2.58 | +1.82 | +1.03 | +2.2 | -1.3 | +2.7 | A2A2 |
| 734HO00126 | PEAK HAXL-ET | +2573 | +308 | +1225 | +36 | -0.04 | +41 | +0.01 | +3.78 | +2.66 | +1.33 | +1.6 | -2.8 | +3.2 | A2A2 |
| 734HO00157 | CURLYS ADMIRE | +2571 | +248 | -251 | +54 | +0.23 | +18 | +0.09 | +4.37 | +3.21 | +2.30 | +0.3 | -2.8 | +2.9 | A2A2 |
| 734HO00121 | PEAK JAGGER-ET | +2513 | +272 | -590 | +37 | +0.22 | +13 | +0.11 | +3.50 | +2.67 | +2.00 | +1.6 | -1.6 | +2.4 | A1A2 |
| 734HO00124 | PEAK HAMMER-ET | +2489 | +151 | +1066 | +13 | -0.10 | +41 | +0.03 | +4.04 | +2.80 | +1.50 | +1.2 | -2.7 | +3.3 | A1A2 |
| 734HO00098 | PEAK AXL-ET | +2471 | +284 | +454 | +49 | +0.11 | +27 | +0.05 | +2.65 | +2.28 | +1.01 | -0.2 | -2.3 | +2.3 | A2A2 |
| 734HO00090 | SIEMERS HOTSPOT-ET | +2408 | +202 | +304 | +23 | +0.04 | +26 | +0.06 | +3.12 | +2.59 | +1.59 | -1.7 | -2.4 | +2.5 | A2A2 |
| 734HO00100 | SIMPLE-DREAMS PJ PP-RED-ET | +2141 | +243 | -166 | -15 | -0.03 | +4 | +0.03 | +0.28 | +1.24 | +0.75 | +3.9 | +0.3 | +2.2 | A2A2 |

NM\$ +631

04/2024 GENOMIC SUMMARY

| | | |
|---------|-------|--------|
| Milk | +1267 | 81%R |
| Fat | +90 | +0.14% |
| Protein | +47 | +0.03% |
| SCS | +2.92 | 77%R |
| PL | +0.6 | 76%R |
| DPR | -1.2 | 75%R |
| HCR | +1.6 | |
| CCR | -0.5 | |

| | |
|-----------------|-------|
| Net Merit \$ | +631 |
| Cheese Merit \$ | +638 |
| F Effic. | +207 |
| Fert. Index | -0.5 |
| CL | -3.5 |
| EFI | -0.5% |

0 DTRS / 0 HERDS

SCE +2.5%

04/2024 CALVING SUMMARY

| | | | | |
|-----|------|------|--------|-------|
| SCE | 2.5% | 74%R | 23 Obs | 0 Dtr |
| DCE | 2.0% | 71%R | 0 Obs | 0 Dtr |
| SSB | 7.1% | 65%R | 23 Obs | 0 Dtr |
| DSB | 4.8% | 65%R | 0 Obs | 0 Dtr |
| GL | -1.0 | | | |

| | |
|-----|---------|
| aAa | 126 |
| DMS | 234,346 |
| KCN | AA |
| BCN | A2A2 |

New Traits

04/2024 HEALTH SUMMARY

| | |
|---------------------------|-------|
| Milk fever (hypocalcemia) | +0.1% |
| Displaced abomasum | +0.5% |
| Ketosis | +2.0% |
| Mastitis | +2.7% |
| Metritis | +1.5% |
| Retained placenta | +0.1% |

GTPI +2894

04/2024 HA TYPE SUMMARY

| | | | | | | |
|----------|-------|------|----------|--------|-----------|-------|
| PTAT | +3.28 | 80%R | UDC | +2.99 | FLC | +1.03 |
| Type USA | | | REL%: 80 | 0 DTRS | / 0 HERDS | |

| | -2 | -1 | 0 | +1 | +2 | |
|-------------------|----|----|---|----|----|-------|
| Stature | | | | | | +2.82 |
| Strength | | | | | | +1.26 |
| Body Depth | | | | | | +1.35 |
| Dairy Form | | | | | | +1.97 |
| Rump Angle | | | | | | -1.72 |
| Thurl Width | | | | | | +2.35 |
| Rear Leg Sv | | | | | | +0.77 |
| Rear Leg Rv | | | | | | +1.52 |
| Foot Angle | | | | | | +2.05 |
| F&L Score | | | | | | +1.54 |
| Fore Udder Attch. | | | | | | +3.53 |
| Rear Udder Hght. | | | | | | +3.92 |
| Rear Udder Wdth. | | | | | | +3.91 |
| Udder Cleft | | | | | | +3.05 |
| Udder Depth | | | | | | +2.98 |
| Front Teat Place. | | | | | | +1.47 |
| Rear Teat Place. | | | | | | +2.45 |
| Teat Length | | | | | | -0.09 |

EXUM



Sire: Progenesis Champion Red
Dam: Vanden-Berge Trpc Daphne-ET

MGS: Peak Tropic-ET
MGD: Vanden-Berge Lmda Daphne-ET

734HO00151

Champion-Red X Tropic X Delta-Lambda
DOB: 12-AUG-2021 • REG# HO840M003224956183

**TYPE
+3.28**



HAXL

734HO00126

Axl X Doc X Monterey

DOB: 08-FEB-2020 • REG: HO840M003212150432



Sire: Peak Axl-ET
Dam: Lorita Honeymoon-ET

MGS: Woodcrest King Doc-ET
MGD: Lorita Monterey Leah-TW

TYPE
+3.78



04/2024 GENOMIC SUMMARY

NM\$ +308

| | | |
|---------|-------|--------|
| Milk | +1225 | 83%R |
| Fat | +36 | -0.04% |
| Protein | +41 | +0.01% |
| SCS | +2.99 | 79%R |
| PL | +1.6 | 78%R |
| DPR | -2.8 | 76%R |
| HCR | +1.7 | |
| CCR | -2.1 | |

| | |
|-----------------|-------|
| Net Merit \$ | +308 |
| Cheese Merit \$ | +311 |
| F Effic. | +88 |
| Fert. Index | -1.9 |
| CL | -3.1 |
| EFI | +9.9% |

0 DTRS / 0 HERDS

04/2024 CALVING SUMMARY

SCE +3.0%

| | | | | |
|-----|------|------|---------|-------|
| SCE | 3.0% | 93%R | 669 Obs | 0 Dtr |
| DCE | 2.3% | 74%R | 0 Obs | 0 Dtr |
| SSB | 6.1% | 85%R | 685 Obs | 0 Dtr |
| DSB | 4.7% | 69%R | 0 Obs | 0 Dtr |
| GL | +0.0 | | | |

| | |
|-----|---------|
| aAa | 213 |
| DMS | 246,126 |
| KCN | BB |
| BCN | A2A2 |

04/2024 HEALTH SUMMARY

New Traits

| | |
|---------------------------|-------|
| Milk fever (hypocalcemia) | +0.0% |
| Displaced abomasum | +0.3% |
| Kefosis | +1.7% |
| Mastitis | +1.5% |
| Metritis | +0.8% |
| Retained placenta | +0.2% |

04/2024 HA TYPE SUMMARY

GTPI +2573

| | | | | | | |
|----------|-------|------|----------|-------|------------------|-------|
| PTAT | +3.78 | 81%R | UDC | +2.66 | FLC | +1.33 |
| Type USA | | | REL%: 81 | | 0 DTRS / 0 HERDS | |

| | -2 | -1 | 0 | +1 | +2 | |
|-------------------|----|----|---|----|----|-------|
| Stature | | | | | | +4.82 |
| Strength | | | | | | +2.78 |
| Body Depth | | | | | | +3.55 |
| Dairy Form | | | | | | +3.55 |
| Rump Angle | | | | | | -1.07 |
| Thurl Width | | | | | | +4.06 |
| Rear Leg Sv | | | | | | +0.30 |
| Rear Leg Rv | | | | | | +2.32 |
| Foot Angle | | | | | | +2.85 |
| F&L Score | | | | | | +2.19 |
| Fore Udder Attch. | | | | | | +3.62 |
| Rear Udder Hght. | | | | | | +3.74 |
| Rear Udder Wdth. | | | | | | +4.13 |
| Udder Cleft | | | | | | +3.34 |
| Udder Depth | | | | | | +3.21 |
| Front Teat Place. | | | | | | +2.50 |
| Rear Teat Place. | | | | | | +3.03 |
| Teat Length | | | | | | -0.25 |



UDC
+2.36

YOLO

734HO00091

Bandares X Meridian X Robust • DOB: 16-07-2017 • REG# HO840M003145398965

BGP YOLO-ET • 734HO00091 • 100% RHA

NM\$ +884

04/2024 GENOMIC SUMMARY

| | | |
|---------|-------|--------|
| Milk | +1032 | 99%R |
| Fat | +104 | +0.22% |
| Protein | +42 | +0.03% |
| SCS | +2.85 | 98%R |
| PL | +3.9 | 95%R |
| DPR | -1.1 | 94%R |
| HCR | +3.4 | |
| CCR | -0.6 | |

| | |
|-----------------|-------|
| Net Merit \$ | +884 |
| Cheese Merit \$ | +893 |
| F Effic. | +246 |
| Fert. Index | -0.3 |
| CL | +1.6 |
| EFI | +9.5% |

1124 DTRS / 308 HERDS

SCE +2.5%

04/2024 CALVING SUMMARY

| | | | | |
|-----|------|------|----------|-------|
| SCE | 2.5% | 97%R | 6240 Obs | 0 Dtr |
| DCE | 2.6% | 90%R | 605 Obs | 0 Dtr |
| SSB | 6.0% | 95%R | 6516 Obs | 0 Dtr |
| DSB | 5.3% | 91%R | 602 Obs | 0 Dtr |
| GL | 0.0 | | | |

| | |
|-----|---------|
| aAa | 324 |
| DMS | 345,135 |
| KCN | BB |
| BCN | A2A2 |

New Traits

04/2024 HEALTH SUMMARY

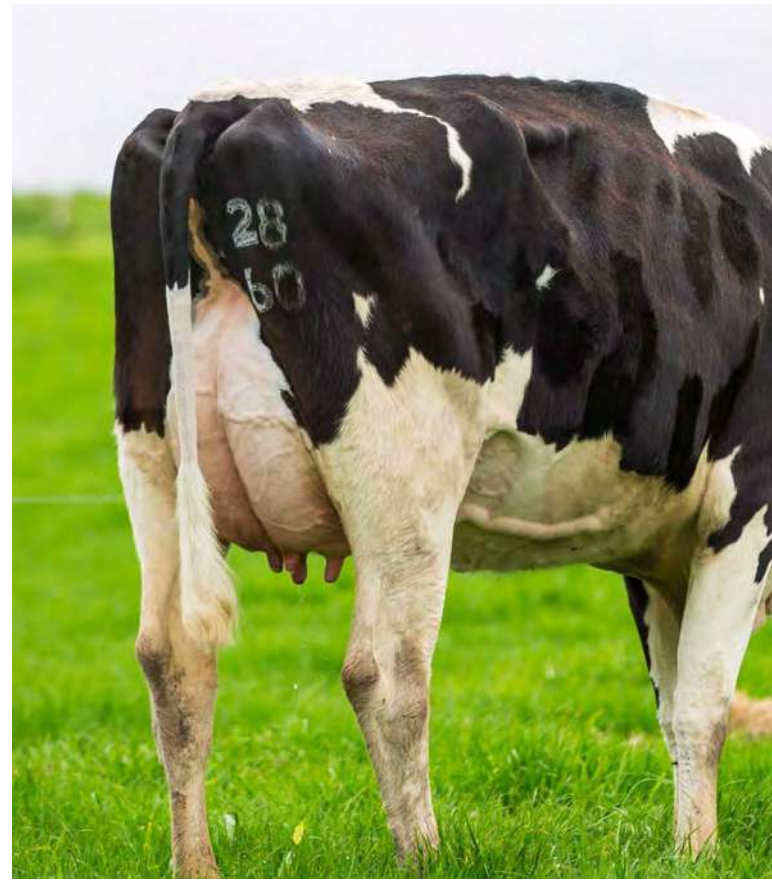
| | |
|---------------------------|-------|
| Milk fever (hypocalcemia) | +0.1% |
| Displaced abomasum | +0.3% |
| Ketosis | +0.9% |
| Mastitis | +2.0% |
| Metritis | -0.2% |
| Retained placenta | -0.6% |

GTPI +2912

04/2024 HA TYPE SUMMARY

| | | |
|------|-------|------|
| PTAT | +1.60 | 97%R |
| UDC | +2.36 | |
| FLC | +0.79 | |

365 DTRS / 98 HERDS



Photos of Yolo Daughters by Andrew Hetke & Andrew Cullen

BADKER

734HO00149

AltaWheelhouse X Millenial X AltaTopshot
 DOB:16-AUG-2021 • REG: HO840M003235932952



Sire: Peak Wheelhouse-ET
 Dam: Peak Madame-ET

MGS: Winstar Juicy Millenial-ET
 MGD: Bomaz Maddle-ET

A2A2



04/2024 GENOMIC SUMMARY

NM\$ +979

| | | |
|---------|-------|--------|
| Milk | +863 | 81%R |
| Fat | +106 | +0.25% |
| Protein | +56 | +0.10% |
| SCS | +2.72 | 78%R |
| PL | +5.3 | 76%R |
| DPR | -0.1 | 75%R |
| HCR | +0.5 | |
| CCR | +0.7 | |

| | |
|-----------------|--------|
| Net Merit \$ | +979 |
| Cheese Merit \$ | +1002 |
| F Effic. | +252 |
| Fert. Index | +0.6 |
| CL | +1.1 |
| EFI | +10.7% |

0 DTRS / 0 HERDS

04/2024 CALVING SUMMARY

SCE +1.3%

| | | | | |
|-----|------|------|--------|-------|
| SCE | 1.3% | 74%R | 47 Obs | 0 Dtr |
| DCE | 1.7% | 70%R | 0 Obs | 0 Dtr |
| SSB | 5.4% | 65%R | 44 Obs | 0 Dtr |
| DSB | 5.3% | 64%R | 0 Obs | 0 Dtr |
| GL | -3.0 | | | |

| | |
|-----|---------|
| aAa | 354 |
| DMS | 345,456 |
| KCN | BB |
| BCN | A2A2 |

04/2024 HEALTH SUMMARY

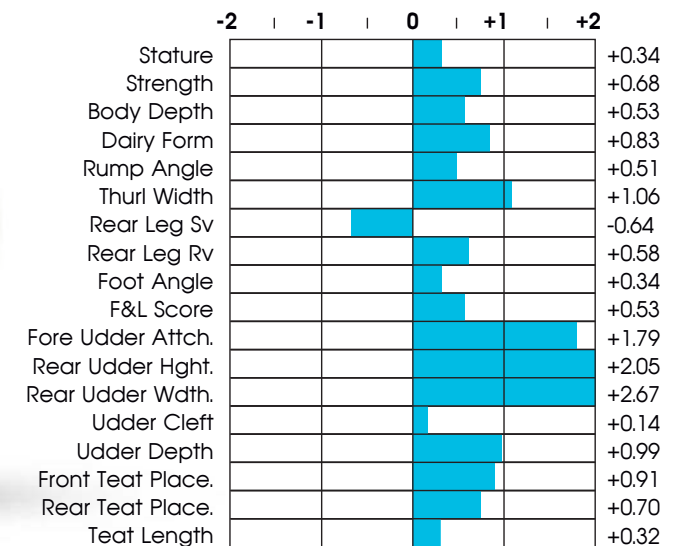
New Traits

| | |
|---------------------------|-------|
| Milk fever (hypocalcemia) | -0.1% |
| Displaced abomasum | +0.7% |
| Kefosis | +1.4% |
| Mastitis | +3.9% |
| Metritis | +2.0% |
| Retained placenta | +0.4% |

04/2024 HA TYPE SUMMARY

GTPI +3017

| | | | | | | |
|------|-------|------|-------|-------|------------------|-------|
| PTAT | +1.26 | 80%R | UDC | +1.70 | FLC | +0.48 |
| Type | USA | | REL%: | 80 | 0 DTRS / 0 HERDS | |



NM\$ +704

04/2024 GENOMIC SUMMARY

| | | | | |
|---------|-------|--------|-------------------------|------|
| Milk | +1909 | 82%R | Net Merit \$ | +704 |
| Fat | +66 | -0.02% | Cheese Merit \$ | +708 |
| Protein | +62 | +0.01% | F Effic. | +211 |
| SCS | +2.90 | 78%R | Fert. Index | -2.4 |
| PL | +3.0 | 78%R | CL | -2.0 |
| DPR | -3.4 | 77%R | EFI | 9.8% |
| HCR | +0.8 | | | |
| CCR | -1.9 | | 0 DTRS / 0 HERDS | |

HOLDEN

**MILK
+1909**

GTPI +2802

04/2024 HA TYPE SUMMARY

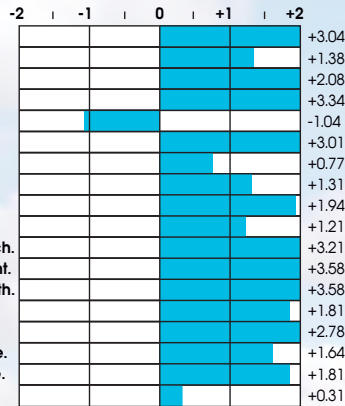
PTAT +2.96 81%R UDC +2.55 FLC +0.66 **0 DTRS / 0 HERDS**

734HO00127
Copyright X Doc X Monterey
DOB: 12-JAN-2020
REG: HO840M003212150395

SCE +1.9%

04/2024 CALVING SUMMARY

| | | | | | | |
|-----|------|------|---------|-------|------------|---------|
| SCE | 1.9% | 85%R | 250 Obs | 0 Dtr | aAa | 315 |
| DCE | 1.3% | 70%R | 2 Obs | 0 Dtr | DMS | 126,123 |
| SSB | 6.3% | 76%R | 222 Obs | 0 Dtr | KCN | AB |
| DSB | 4.4% | 64%R | 2 Obs | 0 Dtr | BCN | A1A2 |
| GL | -0.0 | | | | | |



New Traits

04/2024 HEALTH SUMMARY

| | |
|---------------------------|-------|
| Milk fever (hypocalcemia) | -0.1% |
| Displaced abomasum | +0.8% |
| Ketosis | +1.1% |
| Mastitis | +1.3% |
| Metritis | +1.2% |
| Retained placenta | -0.5% |

NM\$ +248

04/2024 GENOMIC SUMMARY

| | | | | |
|---------|-------|--------|-------------------------|------|
| Milk | -251 | 81%R | Net Merit \$ | +248 |
| Fat | +54 | +0.23% | Cheese Merit \$ | +267 |
| Protein | +18 | +0.09% | F Effic. | +89 |
| SCS | +2.77 | 78%R | Fert. Index | -2.6 |
| PL | +0.3 | 76%R | CL | -4.2 |
| DPR | -2.8 | 76%R | EFI | 9.4% |
| HCR | -0.2 | | | |
| CCR | -3.5 | | 0 DTRS / 0 HERDS | |

ADMIRE

**TYPE
+4.37**

GTPI +2572

04/2024 HA TYPE SUMMARY

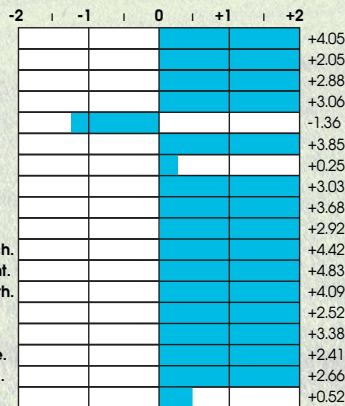
PTAT +4.37 80%R UDC +3.21 FLC +2.30 **0 DTRS / 0 HERDS**

734HO00157
Hanans X Hancock X Crush
DOB: 10-JUN-20222
REG# HO840M003240650329

SCE +3.0%

04/2024 CALVING SUMMARY

| | | | | | | |
|-----|------|------|-------|-------|------------|---------|
| SCE | 3.0% | 63%R | 0 Obs | 0 Dtr | aAa | 243 |
| DCE | 2.3% | 61%R | 0 Obs | 0 Dtr | DMS | 123,126 |
| SSB | 6.9% | 60%R | 0 Obs | 0 Dtr | KCN | BB |
| DSB | 6.9% | 59%R | 0 Obs | 0 Dtr | BCN | A2A2 |
| GL | +2.0 | | | | | |



New Traits

04/2024 HEALTH SUMMARY

| | |
|---------------------------|-------|
| Milk fever (hypocalcemia) | -0.2% |
| Displaced abomasum | -0.6% |
| Ketosis | +0.3% |
| Mastitis | +3.5% |
| Metritis | +0.3% |
| Retained placenta | -0.5% |

MILK
+2263

BLASKA

734HO00111
Doc X Denver X Bombero
DOB: 10-DEC-2018
REG# HO840M003139888016



| | -2 | -1 | 0 | +1 | +2 | |
|-------------------|----|----|---|----|----|-------|
| Stature | | | | | | +1.60 |
| Strength | | | | | | +0.74 |
| Body Depth | | | | | | +1.38 |
| Dairy Form | | | | | | +3.14 |
| Rump Angle | | | | | | -1.74 |
| Thurl Width | | | | | | +1.25 |
| Rear Leg Sv | | | | | | +1.07 |
| Rear Leg Rv | | | | | | +2.00 |
| Foot Angle | | | | | | +1.84 |
| F&L Score | | | | | | +2.01 |
| Fore Udder Attch. | | | | | | +1.84 |
| Rear Udder Hght. | | | | | | +3.59 |
| Rear Udder Wdth. | | | | | | +3.93 |
| Udder Clef | | | | | | +2.11 |
| Udder Depth | | | | | | +0.63 |
| Front Teat Place. | | | | | | +1.51 |
| Rear Teat Place. | | | | | | +2.23 |
| Teat Length | | | | | | +0.13 |

| 04/2024 GENOMIC SUMMARY | | | NM\$ +717 | |
|-------------------------|-------|--------|--------------------|------|
| Milk | +2263 | 92%R | Net Merit \$ | +717 |
| Fat | +76 | -0.04% | Cheese Merit \$ | +711 |
| Protein | +55 | -0.05% | F Effic. | +222 |
| SCS | +2.92 | 89%R | Fert. Index | -0.8 |
| PL | +2.6 | 83%R | CL | -2.0 |
| DPR | -1.4 | 81%R | EFI | 9.7% |
| HCR | +2.0 | | | |
| CCR | -0.5 | | | |
| | | | 67 DTRS / 16 HERDS | |

| 04/2024 HA TYPE SUMMARY | | | GTPI +2850 | |
|-------------------------|-------|------|------------|---------|
| PTAT | +2.79 | 86%R | UDC | +2.24 |
| FLC | +1.77 | | 19 DTRS | 5 HERDS |

| 04/2024 CALVING SUMMARY | | | | | SCE +2.3% | |
|-------------------------|------|------|---------|-------|-----------|---------|
| SCE | 2.3% | 91%R | 501 Obs | 0 Dtr | aAa | 234 |
| DCE | 2.2% | 72%R | 34 Obs | 0 Dtr | DMS | 246,126 |
| SSB | 6.6% | 81%R | 329 Obs | 0 Dtr | KCN | AB |
| DSB | 6.0% | 66%R | 30 Obs | 0 Dtr | BCN | A2A2 |
| GL | -1.0 | | | | | |

| 04/2024 HEALTH SUMMARY | | New Traits | |
|---------------------------|-------|------------|--|
| Milk fever (hypocalcemia) | +0.0% | | |
| Displaced abomasum | +0.2% | | |
| Ketosis | +1.1% | | |
| Mastitis | -0.1% | | |
| Metritis | +1.4% | | |
| Retained placenta | +0.5% | | |

HCR
+2.5

DELAP

734HO00134
Fastball X Positive X Modesty
DOB: 17-MAR-2020
REG: HO840M003215425311



| | -2 | -1 | 0 | +1 | +2 | |
|-------------------|----|----|---|----|----|-------|
| Stature | | | | | | +0.93 |
| Strength | | | | | | +0.05 |
| Body Depth | | | | | | +0.02 |
| Dairy Form | | | | | | +1.40 |
| Rump Angle | | | | | | +0.46 |
| Thurl Width | | | | | | +0.61 |
| Rear Leg Sv | | | | | | -0.08 |
| Rear Leg Rv | | | | | | +0.56 |
| Foot Angle | | | | | | +0.75 |
| F&L Score | | | | | | +0.80 |
| Fore Udder Attch. | | | | | | +2.37 |
| Rear Udder Hght. | | | | | | +2.43 |
| Rear Udder Wdth. | | | | | | +2.16 |
| Udder Clef | | | | | | +0.74 |
| Udder Depth | | | | | | +2.20 |
| Front Teat Place. | | | | | | +0.56 |
| Rear Teat Place. | | | | | | +0.50 |
| Teat Length | | | | | | -0.22 |

| 04/2024 GENOMIC SUMMARY | | | NM\$ +854 | |
|-------------------------|-------|--------|------------------|-------|
| Milk | +1274 | 82%R | Net Merit \$ | +854 |
| Fat | +90 | +0.14% | Cheese Merit \$ | +862 |
| Protein | +48 | +0.03% | F Effic. | +232 |
| SCS | +2.90 | 78%R | Fert. Index | +0.3 |
| PL | +4.0 | 77%R | CL | +0.4 |
| DPR | -0.7 | 77%R | EFI | 10.9% |
| HCR | +2.5 | | | |
| CCR | +0.2 | | | |
| | | | 0 DTRS / 0 HERDS | |

| 04/2024 HA TYPE SUMMARY | | | GTPI +2884 | |
|-------------------------|-------|------|------------|---------|
| PTAT | +1.84 | 80%R | UDC | +1.97 |
| FLC | +0.60 | | 0 DTRS | 0 HERDS |

| 04/2024 CALVING SUMMARY | | | | | SCE +1.8% | |
|-------------------------|------|------|----------|-------|-----------|---------|
| SCE | 1.8% | 84%R | 1251 Obs | 0 Dtr | aAa | 243 |
| DCE | 2.4% | 70%R | 1 Obs | 0 Dtr | DMS | 561,456 |
| SSB | 4.8% | 72%R | 768 Obs | 0 Dtr | KCN | AA |
| DSB | 4.8% | 65%R | 1 Obs | 0 Dtr | BCN | A1A2 |
| GL | -2.0 | | | | | |

| 04/2024 HEALTH SUMMARY | | New Traits | |
|---------------------------|-------|------------|--|
| Milk fever (hypocalcemia) | -0.1% | | |
| Displaced abomasum | +0.6% | | |
| Ketosis | +1.5% | | |
| Mastitis | +0.9% | | |
| Metritis | +1.0% | | |
| Retained placenta | -0.4% | | |

NM\$ +465

04/2024 GENOMIC SUMMARY

| | | |
|---------|-------|--------|
| Milk | +60 | 81%R |
| Fat | +42 | +0.14% |
| Protein | +26 | +0.09% |
| SCS | +2.79 | 78%R |
| PL | +2.6 | 76%R |
| DPR | -1.8 | 75%R |
| HCR | +1.1 | |
| CCR | -1.6 | |

| | |
|-----------------|------|
| Net Merit \$ | +465 |
| Cheese Merit \$ | +483 |
| F Effic. | +111 |
| Fert. Index | -1.3 |
| CL | -1.7 |
| EFI | 9.7% |

0 DTRS / 0 HERDS

SCE +1.9%

04/2024 CALVING SUMMARY

| | | | | |
|-----|------|------|---------|-------|
| SCE | 1.9% | 81%R | 79 Obs | 0 Dtr |
| DCE | 1.8% | 71%R | 0 Obs | 0 Dtr |
| SSB | 6.2% | 64%R | 108 Obs | 0 Dtr |
| DSB | 4.6% | 65%R | 0 Obs | 0 Dtr |
| GL | -1.0 | | | |

| | |
|-----|---------|
| aAa | 243 |
| DMS | 123,126 |
| KCN | AB |
| BCN | A2A2 |

New Traits

04/2024 HEALTH SUMMARY

| | |
|---------------------------|-------|
| Milk fever (hypocalcemia) | +0.0% |
| Displaced abomasum | +0.4% |
| Ketosis | +1.4% |
| Mastitis | +2.6% |
| Metritis | +1.4% |
| Retained placenta | -0.4% |

GTPI +2662

04/2024 HA TYPE SUMMARY

| | | | | | | |
|----------|-------|------|----------|--------|---------|-------|
| PTAT | +3.79 | 80%R | UDC | +3.15 | FLC | +1.81 |
| Type USA | | | REL%: 80 | 0 DTRS | 0 HERDS | |

| | -2 | -1 | 0 | +1 | +2 | |
|-------------------|----|----|---|----|----|-------|
| Stature | | | | | | +3.73 |
| Strength | | | | | | +1.40 |
| Body Depth | | | | | | +2.10 |
| Dairy Form | | | | | | +3.27 |
| Rump Angle | | | | | | -0.73 |
| Thurl Width | | | | | | +3.03 |
| Rear Leg Sv | | | | | | +0.28 |
| Rear Leg Rv | | | | | | +2.49 |
| Foot Angle | | | | | | +2.56 |
| F&L Score | | | | | | +2.45 |
| Fore Udder Attch. | | | | | | +3.81 |
| Rear Udder Hght. | | | | | | +4.45 |
| Rear Udder Wdth. | | | | | | +4.45 |
| Udder Cleff | | | | | | +2.69 |
| Udder Depth | | | | | | +3.44 |
| Front Teat Place. | | | | | | +2.04 |
| Rear Teat Place. | | | | | | +2.34 |
| Teat Length | | | | | | -0.82 |

JAX



Sire: Peak Jagger-ET
Dam: Peak Helena-ET

MGS: Peak Axl-ET
MGD: Lorita Honeymoon

734HO00148
Jagger X Axl X Doc
DOB: 5-JUL-2021 • REG: HO840M003235932767

**TYPE
+3.79**

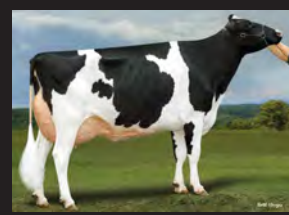


JAGGER

734HO00121

Hunk X Doc X Doorsopen

DOB: 10-JULY-2019 • REG# HO840M003205436591



Sire: Siemers Hunk-ET
Dam: Cedarwall Jiffers-ET

MGS: Woodcrest King Doc
MGD: Midas-Touch Door Jaida-ET



**TYPE
+3.50**



04/2024 GENOMIC SUMMARY

NM\$ +272

| | | |
|---------|-------|--------|
| Milk | -590 | 94%R |
| Fat | +37 | +0.22% |
| Protein | +13 | +0.11% |
| SCS | +2.80 | 91%R |
| PL | +1.6 | 85%R |
| DPR | -1.6 | 81%R |
| HCR | -1.4 | |
| CCR | -1.9 | |

| | |
|-----------------|-------|
| Net Merit \$ | +272 |
| Cheese Merit \$ | +293 |
| F Effic. | +56 |
| Fert. Index | -1.4 |
| CL | -0.6 |
| EFI | +9.6% |

274 DTRS / 115 HERDS

04/2024 CALVING SUMMARY

SCE +2.4%

| | | | | |
|-----|------|------|----------|-------|
| SCE | 2.4% | 94%R | 2917 Obs | 0 Dtr |
| DCE | 2.2% | 84%R | 65 Obs | 0 Dtr |
| SSB | 6.8% | 86%R | 3011 Obs | 0 Dtr |
| DSB | 5.5% | 79%R | 57 Obs | 0 Dtr |
| GL | -1.0 | | | |

| | |
|-----|---------|
| aAa | 234 |
| DMS | 123,126 |
| KCN | AB |
| BCN | A1A2 |

04/2024 HEALTH SUMMARY

New Traits

| | |
|---------------------------|-------|
| Milk fever (hypocalcemia) | +0.0% |
| Displaced abomasum | +0.3% |
| Kefosis | +1.9% |
| Mastitis | +1.7% |
| Metritis | +1.9% |
| Retained placenta | +0.3% |

04/2024 HA TYPE SUMMARY

GTPI +2511

| | | | | | | |
|----------|-------|------|----------|-------|--------------------|-------|
| PTAT | +3.50 | 91%R | UDC | +2.67 | FLC | +2.00 |
| Type USA | | | REL%: 91 | | 90 DTRS / 55 HERDS | |

| | -2 | -1 | 0 | +1 | +2 | |
|-------------------|----|----|---|----|----|-------|
| Stature | | | | | | +4.26 |
| Strength | | | | | | +2.11 |
| Body Depth | | | | | | +2.23 |
| Dairy Form | | | | | | +2.12 |
| Rump Angle | | | | | | +0.31 |
| Thurl Width | | | | | | +2.66 |
| Rear Leg Sv | | | | | | -0.64 |
| Rear Leg Rv | | | | | | +2.93 |
| Foot Angle | | | | | | +3.24 |
| F&L Score | | | | | | +2.67 |
| Fore Udder Attch. | | | | | | +3.38 |
| Rear Udder Hght. | | | | | | +4.17 |
| Rear Udder Wdth. | | | | | | +4.19 |
| Udder Cleff | | | | | | +2.18 |
| Udder Depth | | | | | | +3.06 |
| Front Teat Place. | | | | | | +1.46 |
| Rear Teat Place. | | | | | | +1.89 |
| Teat Length | | | | | | -0.60 |

moving genetics forward[®]

Thank you for reviewing Jetstream Genetics' April 2024 portfolio. This exceptional offering represents just a sampling of what the future holds.

STAY IN TOUCH

web: www.jetstreamgenetics.com

phone: 855.4JETSTREAM (855.453.8787)

email: info@jetstreamgenetics.com

f /JetstreamGenetics



©2022 Jetstream Genetics
N8452 Airport Rd,
P.O. Box 437
Watertown, WI 53094

Join us as we move genetics forward.