

PEAK-BADKER-ET • 734HO00149 • 99% RHA

NM\$ +980

04/2023 GENOMIC SUMMARY

Milk	+922	79%R	Net Merit \$	+980
Fat	+102	+0.23%	Cheese Merit \$	+1001
Protein	+56	+0.09%	F Effic.	+245
SCS	+2.73	75%R	Fert. Index	+0.6
PL	+5.7	74%R	CL	+1.1
DPR	+0.0	73%R	EFI	10.3%
HCR	+0.3			
CCR	+0.7			

0 DTRS / 0 HERDS

SCE +1.4%

04/2023 CALVING SUMMARY

SCE	1.4%	63%R	0 Obs	0 Dtr	aAa	354
DCE	1.8%	58%R	0 Obs	0 Dtr	DMS	345,456
SSB	5.4%	60%R	0 Obs	0 Dtr	KCN	BB
DSB	5.1%	56%R	0 Obs	0 Dtr	BCN	A2A2
GL	-3.0					

New Traits

04/2023 HEALTH SUMMARY

Milk fever (hypocalcemia)	-0.1%
Displaced abomasum	+0.5%
Ketosis	+1.1%
Mastitis	+4.4%
Metritis	+1.8%
Retained placenta	+0.3%

GTPI +3025

04/2023 HA TYPE SUMMARY

PTAT	+1.50	77%R	
UDC	+1.83		
FLC	+0.63		

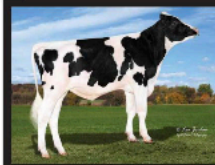
0 DTRS / 0 HERDS

Stature	+0.48	Tall
Strength	+0.81	Strong
Body Depth	+0.65	Deep
Dairy Form	+0.91	Open Rib
Rump Angle	+0.30	Sloped
Thurl Width	+0.90	Wide
Rear Legs-Side View	-0.57	Posty
Rear Legs-Rear View	+0.73	Straight
Foot Angle	+0.71	Steep
Feet & Legs Score	+0.68	High
Fore Udder Attachment	+2.01	Strong
Rear Udder Height	+2.19	High
Rear Udder Width	+2.73	Wide
Udder Cleft	+0.39	Strong
Udder Depth	+1.06	Shallow
Front Teat Placement	+1.10	Close
Rear Teat Placement	+1.00	Close
Teat Length	-0.17	Short

BADKER

734HO00149

AltaWheelhouse X Millennial X AltaTopshot
DOB:16-AUG-2021 • REG: HO840M003235932952



Sire: Peak Wheelhouse-ET

Dam: Peak Madame-ET

MIS: WinStar Juicy Millennial-ET

MICD: Bomaaz Madale-ET



**GTPI
+3025**

