

734HO00091 YOLO

Reg: HO840003145398965
RHA: 100%

DOB: 07/16/2017
DMS: 345,135 aAa: 324

Bgp Yolo-ET TC TP TR
Bandares x Meridian x Robust



08/2022 CDCB SUMMARY MACE				NM\$ +834
Milk	+964	98%R	Cheese Merit \$	+843
Fat	+106	+0.24%	FM\$ +772	GM\$ +842
Protein	+41	+0.04%	Gestation Len. +0	MSP +109
CFP	+147		EFI 9.1% gEFI 10.6%	
SCS	2.85	96%R	Mastitis +2.0	Fert. Index +0.4
PL	+2.2	89%R	Livability +1.1	Heifer Liv. +1.4
DPR	-0.2	92%R	HCR +3.5	CCR +0.4
RFI	-36		29908m 4.4% 1315f 3.2%	967p
Feed Saved	+66	55%R	703 Dtrs 161 Herds	95% US

08/2022 CALVING SUMMARY				SCE 2.3 %
Sire Calving Ease	2.3%	96%R		1257 Obs
Daughter Calving Ease	2.5%	87%R		314 Obs
Sire Stillbirth	5.5%	92%R		1196 Obs
Daughter Stillbirth	5.1%	86%R		271 Obs

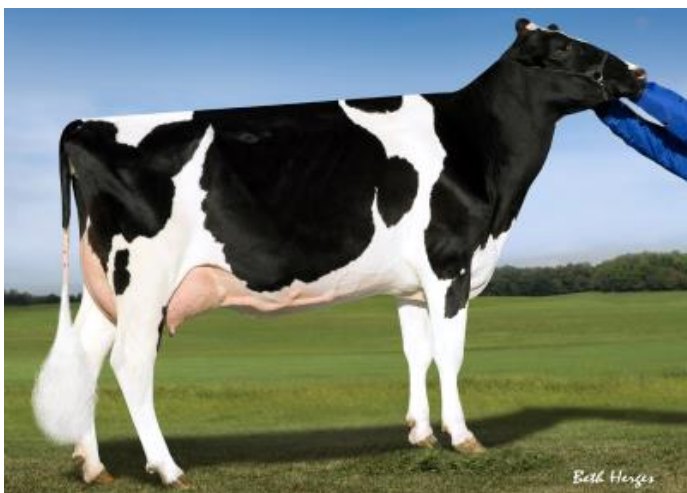
08/2022 HA TYPE SUMMARY				TPI +2927	
PTAT +1.64	97%R	UDC+2.52	FLC+0.76	BSC -0.19	252 D / 68 H

Measurement	Value	Category	Visual
Stature	-0.02	Short	
Strength	-0.42	Frail	
Body Depth	-0.44	Shallow	
Dairy Form	+0.29	Open Rib	
Rump Angle	+0.67	Sloped	
Thurl Width	+1.67	Wide	
Rear Legs-Side	+0.91	Sickle	
Rear Legs-Rear	+1.00	Straight	
Foot Angle	-0.31	Low	
Feet & Legs Score	+0.71	High	
F. Udder Attachment	+2.70	Strong	
Rear Udder Height	+2.88	High	
Rear Udder Width	+2.70	Wide	
Udder Cleft	+1.68	Strong	
Udder Depth	+1.92	Shallow	
Front Teat Placement	+1.80	Close	
Rear Teat P. Rear	+2.08	Close	
Teat Length	-1.21	Short	

Sire: Wa-Del Yoder Bandares-ET
Dam: View-Home Mrdian Iowa-ET VG-86
 02-02 3x 365d 35670m 3.8 1342f 3.1 1099p
MGS: Sully Hart Meridian-ET TY TD
MGD: Pine-Tree 2149Robst 4846-ET VG-87
 02-04 3x 365d 32000m 4.8 1520f 3.2 1036p
MGGs: Roylane Socra Robust-ET TR TV TL TD
MGGD: Pine-Tree Zenith Sheen VG-87 DOM
 01-11 3x 305d 24500m 3.9 959f 3.0 740p



Dam: View-Home Mrdian Iowa-ET



MGD: Pine-Tree 2149Robst 4846-ET



MGGD: Pine-Tree Zenith Sheen

